



Annual Financial Report
Accuracy Certification Statement

For Fiscal Year Ending
6/30/2017

Pennsylvania Department of Education
&
Office of Comptroller Operations

PDE-2056: Intermediate Unit
PDE-2057: School District, AVTS/CTC, Charter School,
and Special Program Jointure

CERTIFICATION: By signing this page I agree that the electronic data submitted is a complete and accurate statement of the financial operations and status of the local education agency for the fiscal year. It has been prepared in accordance with generally accepted accounting principles and established Commonwealth of PA reporting guidelines.

 _____ Chief School Administrator Signature	<u>10/20/17</u> _____ Date
 _____ Board Secretary Signature	<u>10.20.17</u> _____ Date

Annette M Lowery

Contact Person

alowery@ccsd.cc

Contact Person E-mail Address

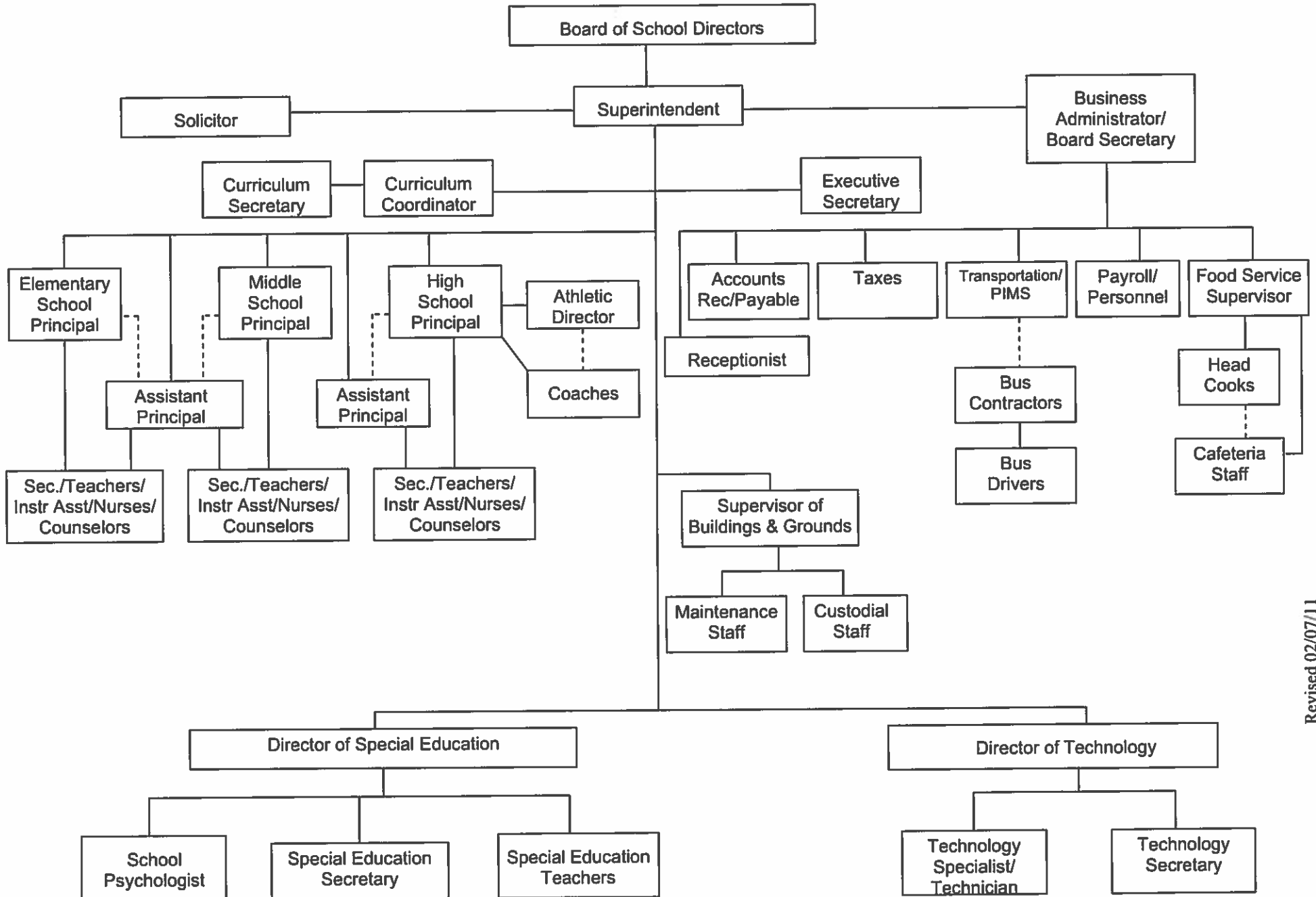
(570)784-2850 Ext :4006

Contact Person Telephone Number

(570)368-7019

Contact Person Fax Number

**CENTRAL COLUMBIA SCHOOL DISTRICT
ORGANIZATIONAL CHART
2000**



Revised 02/07/11

Amounts Expressed In Whole Dollars	<u>General Fund</u> (10)	<u>Public Purpose Trust</u> (27)	<u>Other Compt Approved</u> (28)	<u>Athletic / Activity</u> (29)	<u>Capital Reserve</u> (30) 1850 (31)
Assets And Deferred Outflows Of Resources					
Assets					
0100 Cash and Cash Equivalents	9,774,788			58,771	
0110 Investments	1,604,781				
0120 Taxes Receivable	2,459,441				
0130 Due From Other Funds					
0141 Due From Other Governments					
0142 State Revenue Receivable	642,027				
0143 Federal Revenue Receivable	264,222				
0145 Other Intergovernmental Revenue Receivable					
0146 Due from Primary Government					
0147 Due from Component Unit					
0150 Other Receivables	23,294				
0170 Inventories	25,000				
0180 Prepaid Expenses (Expenditures)					
0190 Other Current Assets					
Total Assets	\$14,793,553			\$58,771	
0910 Deferred Outflows of Resources					
Total Assets And Deferred Outflows Of Resources	\$14,793,553			\$58,771	

Amounts Expressed in Whole Dollars	<u>Capital Reserve (1431)</u> (32)	<u>Other Capital Projects</u> <u>Fund</u> (39)	<u>Debt Service</u> (40)	<u>Permanent</u> (90)	<u>Total Governmental</u> <u>Funds</u>
Assets And Deferred Outflows Of Resources					
Assets					
0100 Cash and Cash Equivalents		2,584,763			12,418,322
0110 Investments					1,604,781
0120 Taxes Receivable					2,459,441
0130 Due From Other Funds					
0141 Due From Other Governments					
0142 State Revenue Receivable					642,027
0143 Federal Revenue Receivable					264,222
0145 Other Intergovernmental Revenue Receivable					
0146 Due from Primary Government					
0147 Due from Component Unit					
0150 Other Receivables					23,294
0170 Inventories					25,000
0180 Prepaid Expenses (Expenditures)					
0190 Other Current Assets					
Total Assets		\$2,584,763			\$17,437,087
0910 Deferred Outflows of Resources					
Total Assets And Deferred Outflows Of Resources		\$2,584,763			\$17,437,087

Amounts Expressed in Whole Dollars	<u>General Fund</u> (10)	<u>Public Purpose Trust</u> (27)	<u>Other Compt Approved</u> (28)	<u>Athletic / Activity</u> (29)	<u>Capital Reserve (690.</u> <u>1850)</u> (31)
Liabilities And Deferred Inflows Of Resources And Fund Balances					
Liabilities					
0400 Due to Other Funds					
0411 Due to Other Governments					
0412 Due to Primary Government					
0413 Due to Component Unit					
0420 Accounts Payable	60,996				
0430 Contracts Payable					
0440 Current Portion of Long-Term Debt					
0450 Short-Term Payables					
0461 Accrued Salaries and Benefits					
0462 Payroll Deductions and Withholding	1,214,492				
0480 Unearned Revenues					
0490 Other Current Liabilities				58,771	
Total Liabilities	\$1,275,488			\$58,771	
0950 Deferred Inflows of Resources	1,346,896				
Fund Balances					
0810 Nonspendable Fund Balance	25,000				
0820 Restricted Fund Balance	100,249				
0830 Committed Fund Balance	5,448,593				
0840 Assigned Fund Balance	575,000				
0850 Unassigned Fund Balance	6,022,327				
Total Fund Balances	\$12,171,169				
Total Liabilities, Deferred Inflows Of Resources And Fund Balances	\$14,793,553			\$58,771	

Amounts Expressed in Whole Dollars	<u>Capital Reserve (1431)</u> (32)	<u>Other Capital Projects</u> <u>Fund</u> (39)	<u>Debt Service</u> (40)	<u>Permanent</u> (90)	<u>Total Governmental</u> <u>Funds</u>
Liabilities And Deferred Inflows Of Resources And Fund Balances					
Liabilities					
0400 Due to Other Funds					
0411 Due to Other Governments					
0412 Due to Primary Government					
0413 Due to Component Unit					
0420 Accounts Payable					60,996
0430 Contracts Payable					
0440 Current Portion of Long-Term Debt					
0450 Short-Term Payables					
0461 Accrued Salaries and Benefits					
0462 Payroll Deductions and Withholding					1,214,492
0480 Unearned Revenues					
0490 Other Current Liabilities					58,771
Total Liabilities					\$1,334,259
0950 Deferred Inflows of Resources					1,346,896
Fund Balances					
0810 Nonspendable Fund Balance					25,000
0820 Restricted Fund Balance	2,584,763				2,685,012
0830 Committed Fund Balance					5,448,593
0840 Assigned Fund Balance					575,000
0850 Unassigned Fund Balance					6,022,327
Total Fund Balances	\$2,584,763				\$14,755,932
Total Liabilities, Deferred Inflows Of Resources And Fund Balances	\$2,584,763				\$17,437,087

Amounts Expressed in Whole Dollars	<u>General Fund</u> (10)	<u>Public Purpose Trust</u> (27)	<u>Other Compt Approved</u> (28)	<u>Athletic / Activity</u> (29)	<u>Capital Reserve (690)</u> <u>1850</u> (31)
Revenues					
6000 Revenue from Local Sources	17,574,707				
7000 Revenue from State Sources	12,487,459				
8000 Revenue from Federal Sources	380,830				
Total Revenues	\$30,442,996				
Expenditures					
1000 Instruction	15,661,094				
2000 Support Services	9,208,748				
3000 Operation of Non-Instructional Services	669,685				
4000 Facilities Acquisition, Construction and Improvement Services					
5110 Debt Service	2,542,232				
5130 Refund of Prior Year Revenues / Receipts					
Total Expenditures	\$28,081,759				
Excess (Deficiency) Of Revenues Over Expenditures	\$2,361,237				
Other Financing Sources (Uses)					
9110 Face Value of Bonds Issued					
9120 Proceeds from Refunding of Bonds	9,995,000				
9130 Bond Premiums	2,952				
9200 Proceeds from Extended-Term Financing					
9300 Interfund Transfers - IN					
9400 Sale of or Compensation for Loss of Fixed Assets					
9710 Transfers from Component Units					
9720 Transfers from Primary Governments					
9910 Other Financing Sources Not Listed in the 9000 Series					
9990 Insurance Recoveries					
5120 Debt Service – Refunded Bonds	9,809,730				
5150 Bond Discounts	92,454				
5200 Interfund Transfers – Out	950,000				
5300 Transfers Out to Component Units/Primary Governments					
Total Other Financing Sources (Uses)	(\$854,232)				

.EA : 116191503 Central Columbia SD

Printed 10/20/2017 2:13:01 PM

Page - 2 of 4

Amounts Expressed in Whole Dollars	<u>Capital Reserve (1431)</u> (32)	<u>Other Capital Projects</u> <u>Fund</u> (39)	<u>Debt Service</u> (40)	<u>Permanent</u> (90)	<u>Total Governmental</u> <u>Funds</u>
Revenues					
6000 Revenue from Local Sources		8,196			17,582,903
7000 Revenue from State Sources					12,487,459
8000 Revenue from Federal Sources					380,830
Total Revenues		\$8,196			\$30,451,192
Expenditures					
1000 Instruction					15,661,094
2000 Support Services		660,390			9,869,138
3000 Operation of Non-Instructional Services					669,685
4000 Facilities Acquisition, Construction and Improvement Services					
5110 Debt Service					2,542,232
5130 Refund of Prior Year Revenues / Receipts					
Total Expenditures		\$660,390			\$28,742,149
Excess (Deficiency) Of Revenues Over Expenditures		(\$652,194)			\$1,709,043
Other Financing Sources (Uses)					
9110 Face Value of Bonds Issued					9,995,000
9120 Proceeds from Refunding of Bonds					2,952
9130 Bond Premiums					
9200 Proceeds from Extended-Term Financing					
9300 Interfund Transfers - IN		950,000			950,000
9400 Sale of or Compensation for Loss of Fixed Assets					
9710 Transfers from Component Units					
9720 Transfers from Primary Governments					
9910 Other Financing Sources Not Listed in the 9000 Series					
9990 Insurance Recoveries					
5120 Debt Service -- Refunded Bonds					9,809,730
5150 Bond Discounts					92,454
5200 Interfund Transfers -- Out					950,000
5300 Transfers Out to Component Units/Primary Governments					
Total Other Financing Sources (Uses)		\$950,000			\$95,768

Amounts Expressed in Whole Dollars	<u>General Fund</u> (10)	<u>Public Purpose Trust</u> (27)	<u>Other Compt Approved</u> (28)	<u>Athletic / Activity</u> (29)	<u>Capital Reserve (690)</u> 1850 (31)
Special And Extraordinary Items					
9920 Special Items – Gains					
9930 Extraordinary Items – Gains					
5520 Special Items – Losses					
5530 Extraordinary Items – Losses					
Net Change In Fund Balances	\$1,507,005				
Fund Balance					
0001 Fund Balance - Beginning of Fiscal Year	10,664,164				
Fund Balance - End Of Year	\$12,171,169				

Amounts Expressed in Whole Dollars	<u>Capital Reserve (1431)</u> (32)	<u>Other Capital Projects Fund</u> (39)	<u>Debt Service</u> (40)	<u>Permanent</u> (90)	<u>Total Governmental Funds</u>
Special And Extraordinary Items					
9920 Special Items – Gains					
9930 Extraordinary Items – Gains					
5520 Special Items – Losses					
5530 Extraordinary Items – Losses					
Net Change in Fund Balances	\$297,806				\$1,804,811
Fund Balance					
0001 Fund Balance - Beginning of Fiscal Year	2,286,957				12,951,121
Fund Balance - End Of Year	\$2,584,763				\$14,755,932

Amounts Expressed in Whole Dollars	<u>Food Service</u> (51)	<u>Child Care</u> <u>Operations</u> (52)	<u>Other Enterprise</u> (58)	<u>TOTAL</u>	<u>Internal Service</u> (60)
Assets And Deferred Outflows Of Resources					
Current Assets					
0100 Cash and Cash Equivalents	148,453			148,453	
0110 Investments					
0130 Due From Other Funds					
0141 Due From Other Governments					
0142 State Revenue Receivable					
0143 Federal Revenue Receivable					
0146 Due from Primary Government					
0147 Due from Component Unit					
0150 Other Receivables					
0170 Inventories	14,380			14,380	
0180 Prepaid Expenses (Expenditures)					
0190 Other Current Assets					
Total Current Assets	\$162,833			\$162,833	
Noncurrent Assets					
0211 Land					
0212 Site Improvements (Net)					
0220 Buildings and Building Improvements (Net)					
0230 Machinery, Equipment and Furniture (Net)	18,308			18,308	
0250 Construction in Progress					
0260 Long Term Prepayments					
0290 Other Noncurrent Assets					
Total Noncurrent Assets	\$18,308			\$18,308	
0910 Deferred Outflows of Resources					
Total Assets And Deferred Outflows Of Resources	\$181,141			\$181,141	

Amounts Expressed in Whole Dollars	<u>Food Service</u> (51)	<u>Child Care</u> <u>Operations</u> (52)	<u>Other Enterprise</u> (58)	<u>TOTAL</u>	<u>Internal Service</u> (60)
Liabilities And Deferred Inflows Of Resources And Net Position					
Current Liabilities					
0400 Due to Other Funds					
0411 Due to Other Governments					
0413 Due to Component Unit					
0420 Accounts Payable					
0430 Contracts Payable					
0440 Current Portion of Long-Term Debt					
0450 Short-Term Payables					
0461 Accrued Salaries and Benefits					
0462 Payroll Deductions and Withholding		22,292		22,292	
0480 Unearned Revenues		21,093		21,093	
0490 Other Current Liabilities					
Total Current Liabilities		\$43,385		\$43,385	
Noncurrent Liabilities					
0510 Bonds Payable					
0520 Extended-Term Financing Agreements Payable					
0530 Lease-Purchase Obligations					
0540 Accumulated Compensated Absences					
0550 Authority Lease Obligations					
0560 Other Post-Employment Benefits (OPEB)					
0570 Net Pension Liability					
0599 Other Noncurrent Liabilities					
Total Noncurrent Liabilities					
Total Liabilities		\$43,385		\$43,385	
Deferred Inflows of Resources					
0950 Deferred Inflows of Resources					
Net Position					
0791 Net Investment in Capital Assets		18,308		18,308	
0008 Restricted Net Position (0792 – 0798)					
0799 Unrestricted Net Position		119,448		119,448	
Total Net Position		\$137,756		\$137,756	
Total Liabilities And Deferred Inflows Of Resources And Net Position		\$181,141		\$181,141	

Amounts Expressed in Whole Dollars	<u>Food Service</u> (51)	<u>Child Care Operations</u> (52)	<u>Other Enterprise</u> (58)	<u>TOTAL</u>	<u>Internal Service</u> (60)
Operating Revenues					
6600 Food Service Revenue	397,805			397,805	
0071 Charges for Services					
0072 Other Operating Revenue					
Total Operating Revenues	\$397,805			\$397,805	
Operating Expenses					
100 Personnel Services – Salaries	285,569			285,569	
200 Personnel Services – Employee Benefits	134,351			134,351	
300 Purchased Professional and Technical Services					
400 Purchased Property Services					
500 Other Purchased Services	459			459	
600 Supplies	371,153			371,153	
740 Depreciation	5,324			5,324	
810 Dues and Fees	18,058			18,058	
890 Miscellaneous Expenditures					
Total Operating Expenses	\$814,914			\$814,914	
Operating Income (Loss)	(\$417,109)			(\$417,109)	
Non Operating Revenues (Expenses)					
6500 Earnings on Investments	30			30	
6920 Contributions and Donations from Private Sources					
6930 Gains or Losses on Sale of Fixed Assets					
6991 Refunds of a Prior Year Expenditure	57			57	
7000 Revenue from State Sources	57,484			57,484	
8000 Revenue from Federal Sources	346,620			346,620	
820 Claims and Judgments Against the LEA					
830 Interest					
TOTAL Non Operating Revenues (Expenses)	\$404,191			\$404,191	
Income (Loss) Before Contributions And Transfers	(\$12,918)			(\$12,918)	

Amounts Expressed in Whole Dollars	<u>Food Service</u> (51)	<u>Child Care Operations</u> (52)	<u>Other Enterprise</u> (58)	<u>TOTAL</u>	<u>Internal Service</u> (60)
Contributions, Transfers, and Special and Extraordinary Items					
5200 Interfund Transfers – Out					
5300 Transfers Out to Component Units/Primary Governments					
5520 Special Items – Losses					
5530 Extraordinary Items – Losses					
9300 Interfund Transfers - IN					
9500 Capital Contributions					
9700 Transfers IN From Component Units/Primary Governments					
9920 Special Items – Gains					
9930 Extraordinary Items – Gains					
Change in Net Position	(\$12,918)			(\$12,918)	
0002 Net Position - Beginning of Fiscal Year	150,674			150,674	
0003 Accounting Changes / Residual Equity Transfers					
Net Position - End Of Year	\$137,756			\$137,756	

Amounts Expressed in Whole Dollars	<u>Food Service</u> (51)	<u>Child Care Operations</u> (52)	<u>Other Enterprise</u> (58)	<u>TOTAL</u>	<u>Internal Service(60)</u>
Cash Flows From Operating Activities					
0011 Cash Receipts From Users	401,600			401,600	
0012 Cash Receipts From Assessments Made to Other Funds					
0013 Cash Receipts From Earnings on Investments					
0014 Cash Receipts From Other Operating Revenue					
0015 Cash Payments To Employees For Services	416,963			416,963	
0016 Cash Payments For Insurance Claims					
0017 Cash Payments To Suppliers For Goods and Services	363,311			363,311	
0018 Cash Payments For Other Operating Expenses	18,517			18,517	
Net Cash Provided By (Used For) Operating Activities	(\$397,191)			(\$397,191)	
Cash Flows From Non-Capital Financing Activities					
0021 Receipts From Local Sources - 6000					
0022 Receipts From State Sources - 7000	57,484			57,484	
0023 Receipts From Federal Sources -8000	353,953			353,953	
0024 Notes and Loans Received (Repaid)					
0025 Interest Paid on Notes/Loans - 5100-830					
0026 Operating Transfers In (Out)/Residual Equity Trans					
0027 Operating Transfers In (Out) Primary Government / Comp Unit					
0028 Receipts From Refund of Prior Year Expenditures - 6991	57			57	
0029 Special and Extraordinary Gains (losses)					
Net Cash Prov By (Used for) Non-Capital Financing Activities	\$411,494			\$411,494	
Cash Flows From Capital and Related Financing Activities					
0031 Payments For Fac Acq, Const, and Imp - 4000					
0032 Gain / (Loss) on Sale of Fixed Assets - 6930					
0033 Proceeds From Extended Term Financing - 9200					
0034 Principal Paid on Financing Agreements					
0035 Interest Paid on Financing Agreements - 5100-830					
0036 (Inc) Dec in Contributed Capital					
Net Cash Prov By (Used for) Capital and Related Financing Activities					
Cash Flows From Investing Activities					
0041 Earnings on Investments - 6500	30			30	
0042 Purchase of Inv Securities / Deposits to Inv Pools					
0043 Receipts From Investment Pool Withdrawals					
0044 Proceeds from Sale and Maturity of Inv Securities					
0045 Loans Received (Paid)					
Net Cash Prov By (Used for) Investing Activities	\$30			\$30	

	<u>Food Service</u> (51)	<u>Child Care Operations</u> (52)	<u>Other Enterprise</u> (58)	<u>TOTAL</u>	<u>Internal Service</u> (60)
Net Increase (Decrease) in Cash Flows	14,333			14,333	
0004 Cash and Cash Equivalents Beginning of Year	134,120			134,120	
Cash and Cash Equivalents at Year End	\$148,453			\$148,453	
Reconciliation of Operating Income (Loss) To Net Cash Provided by (Used For) Operating Activities					
0005 Operating Income (Loss) per REP	(417,109)			(417,109)	
Adjustments					
0051 Depreciation and Net Amortization	5,324			5,324	
0052 Provision for Uncollectible Accounts					
0053 Other Adjustments					
Effect of Changes in Assets, Liabilities, Deferred Outflows and Deferred Inflows					
0054 (Inc) Dec In Accounts Receivable (0120-0150)	4,422			4,422	
0055 Advances to Other Funds (0160)					
0056 (Inc) Dec in Inventories (0170)	7,842			7,842	
0057 (Inc) Dec in Prepaid Expenses (0180)					
0058 (Inc) Dec in Other Current or Noncurrent Assets					
0064 Deferred Outflows (0910)					
0059 Inc (Dec) in Accounts Payable (0400-0450)					
0060 Inc (Dec) in Accrued Salaries/Benefits (0461)					
0065 Inc (Dec) in Net Pension Liabilities (0570)					
0066 Inc (Dec) in Other Postemp Benefit Oblig (0560)					
0061 Inc (Dec) in Payroll Deductions/Withholding (0462)	2,957			2,957	
0062 Inc (Dec) in Unearned Revenue (0480)	(627)			(627)	
0063 Inc (Dec) in Other Current or Noncurrent Liabilities					
0067 Deferred Inflows (0950)					
Total Adjustments	\$19,918			\$19,918	
Cash Provided By (Used for) Total	(\$397,191)			(\$397,191)	

COMBINED STATEMENT OF CASH FLOWS
SCHEDULE OF NONCASH INVESTING, CAPITAL, AND FINANCING ACTIVITIES

Explanation of Transaction and Balance Sheet Effect	Amount
Total	

EA : 116191503 Central Columbia SD

Printed 10/20/2017 2:13:05 PM

Amounts Expressed in Whole Dollars	<u>Private Purpose Trust</u> (71)	<u>Investment Trust</u> (72)	<u>Pension Trust</u> (73)	<u>Activity</u> (81)
Assets And Deferred Outflows Of Resources				
Assets				
0100 Cash and Cash Equivalents	103,027			104,389
0110 Investments				
0130 Due From Other Funds				
0147 Due from Component Unit				
0150 Other Receivables				
0170 Inventories				
0180 Prepaid Expenses (Expenditures)				
0190 Other Current Assets				
0220 Buildings and Building Improvements (Net)				
0230 Machinery, Equipment and Furniture (Net)				
Total Assets	\$103,027			\$104,389
0910 Deferred Outflows of Resources				
Total Assets And Deferred Outflows Of Resources	\$103,027			\$104,389

Amounts Expressed in Whole Dollars	<u>Other Agency</u> (89)	<u>Discrete Component Units</u> (98)	<u>Discrete Component Units</u> (99)	<u>Total Fiduciary Funds</u>
Assets And Deferred Outflows Of Resources				
Assets				
0100 Cash and Cash Equivalents				207,416
0110 Investments				
0130 Due From Other Funds				
0147 Due from Component Unit				
0150 Other Receivables				
0170 Inventories				
0180 Prepaid Expenses (Expenditures)				
0190 Other Current Assets				
0220 Buildings and Building Improvements (Net)				
0230 Machinery, Equipment and Furniture (Net)				
Total Assets				\$207,416
0910 Deferred Outflows of Resources				
Total Assets And Deferred Outflows Of Resources				\$207,416

Amounts Expressed in Whole Dollars	<u>Private Purpose Trust</u> (71)	<u>Investment Trust</u> (72)	<u>Pension Trust</u> (73)	<u>Activity</u> (81)
Liabilities, Deferred Inflows Of Resources And Net Position				
Liabilities				
0400 Due to Other Funds				
0411 Due to Other Governments				
0412 Due to Primary Government				
0413 Due to Component Unit				
0420 Accounts Payable				
0430 Contracts Payable				
0450 Short-Term Payables				
0461 Accrued Salaries and Benefits				
0462 Payroll Deductions and Withholding				
0480 Unearned Revenues				
0490 Other Current Liabilities				104,389
Total Liabilities				\$104,389
Deferred Inflows of Resources				
0950 Deferred Inflows of Resources				
Net Position				
0791 Net Investment in Capital Assets				
0009 Restricted Net Position (0792 – 0798)				
0799 Unrestricted Net Position		103,027		
Total Net Position		\$103,027		
Total Liabilities, Deferred Inflows Of Resources And Net Position		\$103,027		\$104,389

Amounts Expressed in Whole Dollars	<u>Other Agency</u> (89)	<u>Discrete Component Units</u> (98)	<u>Discrete Component Units</u> (99)	<u>Total Fiduciary Funds</u>
Liabilities, Deferred Inflows Of Resources And Net Position				
Liabilities				
0400 Due to Other Funds				
0411 Due to Other Governments				
0412 Due to Primary Government				
0413 Due to Component Unit				
0420 Accounts Payable				
0430 Contracts Payable				
0450 Short-Term Payables				
0461 Accrued Salaries and Benefits				
0462 Payroll Deductions and Withholding				
0480 Unearned Revenues				
0490 Other Current Liabilities				104,389
Total Liabilities				\$104,389
0950 Deferred Inflows of Resources				
Net Position				
0791 Net Investment in Capital Assets				
0009 Restricted Net Position (0792 - 0798)				
0799 Unrestricted Net Position				103,027
Total Net Position				\$103,027
Total Liabilities, Deferred Inflows Of Resources And Net Position				\$207,416

Amounts Expressed in Whole Dollars	<u>Private Purpose Trust</u> (71)	<u>Investment Trust</u> (72)	<u>Pension Trust</u> (73)	<u>Discrete Component</u> <u>Units</u> (98)	<u>Discrete Component</u> <u>Units</u> (99)	<u>Total Fiduciary</u> <u>Funds</u>
Additions						
0091 Gifts and Contributions	9,036					9,036
0092 Other Additions						
Deductions						
0093 Scholarships Awarded	8,900					8,900
0094 Other Deductions						
Change in Net Position	\$136					\$136
0006 Net Position – Beginning of Fiscal Year	102,891					102,891
0007 Net Position Held in Trust for Pension Benefits						
Net Position - End of Fiscal Year	\$103,027					\$103,027

	<u>Revenue Reported In Current Year</u>	<u>Current Year Tax Accrual</u>	<u>Prior Year Tax Accrual</u>	<u>Taxes Collected In Current Year</u>
Revenue from Local Sources				
6111 Current Real Estate Taxes	12,132,618.17			12,132,618.17
6112 Interim Real Estate Taxes	46,238.85			46,238.85
6113 Public Utility Realty Taxes	17,819.77			17,819.77
6114 Payments in Lieu of Current Taxes - State / Local	1,203.36			1,203.36
6120 Current Per Capita Taxes, Section 679	40,297.97			40,297.97
6141 Current Act 511 Per Capita Taxes	43,958.07			43,958.07
6151 Current Act 511 Earned Income Taxes	3,796,262.50			3,796,262.50
6153 Current Act 511 Real Estate Transfer Taxes	202,422.16			202,422.16
6411 Delinquent Real Estate Taxes	599,885.34			599,885.34
6420 Delinquent Per Capita Taxes, Section 679	5,563.97			5,563.97
6440 Delinquent Local Enabling Taxes - Flat Rate Assessments	5,563.66			5,563.66
6500 Earnings on Investments	72,978.81			
6700 Revenues from LEA Activities	43,058.00			
6832 Federal IDEA Revenue Received as Pass Through	327,000.19			
6910 Rentals	5,970.00			
6944 Receipts from Other LEAs in Pennsylvania - Education	112,798.23			
6999 Other Revenues Not Specified Above	121,068.36			
TOTAL Revenue from Local Sources	\$17,574,707.41			\$16,891,833.82

**Revenue Reported
In Current Year**

Revenue from State Sources

7110 Basic Education Funding	6,375,335.09
7160 Tuition for Orphans Subsidy	73,136.42
7220 Vocational Education	39,653.12
7271 Special Education funds for School-Aged Pupils	1,165,342.20
7311 Pupil Transportation Subsidy	757,079.00
7312 Nonpublic and Charter School Pupil Transportation Subsidy	46,970.00
7320 Rental and Sinking Fund Payments / Building Reimbursement Subsidy	1,298,092.05
7330 Health Services (Medical, Dental, Nurse, Act 25)	33,182.92
7340 State Property Tax Reduction Allocation	358,237.29
7505 Ready to Learn Block Grant	255,774.00
7599 Other State Revenue Not Listed Elsewhere in the 7000 Series	42,616.02
7810 State Share of Social Security and Medicare Taxes	271,224.72
7820 State Share of Retirement Contributions	1,770,816.47
TOTAL Revenue from State Sources	\$12,487,459.30

Revenue Reported
In Current Year

Revenue from Federal Sources

8514 NCLB, Title I - Improving the Academic Achievement of the Disadvantaged	224,605.00
8515 NCLB, Title II - Preparing, Training and Recruiting High Quality Teachers and Principals	63,364.00
8810 School-Based Access Medicaid Reimbursement Program (SBAP) Reimbursements (Access)	88,766.15
8820 Medical Assistance Reimbursement for Administrative Claiming (Quarterly) Program	4,094.46
TOTAL Revenue from Federal Sources	\$380,829.61

	Revenue Reported in Current Year	
<u>Other Financing Sources</u>		
9120 Proceeds from Refunding of Bonds	9,995,000.00	
9130 Bond Premiums	2,952.00	
TOTAL Other Financing Sources	\$9,997,952.00	
TOTAL FROM ALL SOURCES	\$40,440,948.32	\$16,891,833.82

Revenue from Local Sources	17,574,707.41
Revenue from State Sources	12,487,459.30
Revenue from Federal Sources	380,829.61
Other Financing Sources	9,997,952.00
TOTAL FROM ALL SOURCES	\$40,440,948.32

.EA : 116191503 Central Columbia SD

Printed 10/20/2017 2:13:09 PM

Page - 1 of 21

General Fund (10)		<u>Total</u>
1000 Instruction		
100 Personnel Services – Salaries		
100 Personnel Services – Salaries		8,539,841.65
Total Personnel Services – Salaries		\$8,539,841.65
200 Personnel Services – Employee Benefits		
210 Group Insurance – Contracted Provider		1,408,589.33
220 Social Security Contributions		630,071.37
230 PSERS Retirement Contributions		2,542,660.98
250 Unemployment Compensation		(2,565.50)
260 Workers' Compensation		40,889.58
Total Personnel Services – Employee Benefits		\$4,619,645.76
300 Purchased Professional and Technical Services		
322 Professional Educational Services – Ius		391,279.32
323 Professional Educational Services – Other Educational Agencies		319,124.84
324 Professional Educational Services – Employee Training and Development Services		632.00
329 Professional Educational Services – Other		25,575.50
330 Other Professional Services		1,600.00
Total Purchased Professional and Technical Services		\$738,211.66
400 Purchased Property Services		
430 Repairs and Maintenance Services		5,691.90
440 Rentals		46,631.41
Total Purchased Property Services		\$52,323.31
500 Other Purchased Services		
510 Student Transportation Services		23,986.70
561 Tuition To Other School Districts Within the State		7,341.90
562 Tuition To Pennsylvania Charter Schools		332,394.31
564 Tuition To Career and Technology Centers		1,048,854.00
567 Tuition To Approved Private Schools (APS) and PA Chartered Schools for the Deaf and Blind		1,139.11
568 Tuition To Private Residential Rehabilitative Institutions (PRRI) [In-State] and Detention Centers		3,330.45
569 Tuition – Other		300.00
580 Travel		7,906.71
594 IU Payment By Withholding for Institutionalized Children's Programs – Special Classes		235.17
599 Other Miscellaneous Purchased Services		1,525.00
Total Other Purchased Services		\$1,427,013.35
600 Supplies		
610 General Supplies		191,840.43
640 Books and Periodicals		30,139.89
650 Supplies & Fees – Technology Related		47,900.44
Total Supplies		\$269,880.76
800 Other Objects		
810 Dues and Fees		14,178.00
Total Other Objects		\$14,178.00
Total 1000 Instruction		\$15,661,094.49

General Fund (10)				
1100 Regular Programs – Elementary / Secondary	Elementary	Secondary	Federal	Total
100 Personnel Services – Salaries				
100 Personnel Services – Salaries	3,258,525.01	2,962,113.59	264,842.72	6,485,481.32
Total Personnel Services – Salaries	\$3,258,525.01	\$2,962,113.59	\$264,842.72	\$6,485,481.32
200 Personnel Services – Employee Benefits				
210 Group Insurance – Contracted Provider	720,348.74	259,032.15		979,380.89
220 Social Security Contributions	259,186.03	219,913.23		479,099.26
230 PSERS Retirement Contributions	1,039,035.24	894,065.93		1,933,101.17
250 Unemployment Compensation	2,917.24	(8,032.80)		(5,115.56)
260 Workers' Compensation	17,015.39	13,951.94		30,967.33
Total Personnel Services – Employee Benefits	\$2,038,502.64	\$1,378,930.45		\$3,417,433.09
300 Purchased Professional and Technical Services				
322 Professional Educational Services – Ius	4,534.75	4,534.75		9,069.50
324 Professional Educational Services – Employee Training and Development Services	266.00	266.00		532.00
329 Professional Educational Services – Other	750.00			750.00
Total Purchased Professional and Technical Services	\$5,550.75	\$4,800.75		\$10,351.50
400 Purchased Property Services				
430 Repairs and Maintenance Services	811.00	3,386.30		4,197.30
440 Rentals	21,493.03	25,138.38		46,631.41
Total Purchased Property Services	\$22,304.03	\$28,524.68		\$50,828.71
500 Other Purchased Services				
510 Student Transportation Services	4,709.06	10,577.09		15,286.15
561 Tuition To Other School Districts Within the State		7,341.90		7,341.90
562 Tuition To Pennsylvania Charter Schools		213,739.98		213,739.98
567 Tuition To Approved Private Schools (APS) and PA Chartered Schools for the Deaf and Blind	150.00	989.11		1,139.11
568 Tuition To Private Residential Rehabilitative Institutions (PRRI) [In-State] and Detention Centers	1,665.23	1,665.22		3,330.45
569 Tuition – Other	150.00	150.00		300.00
580 Travel		3,456.34		3,456.34
599 Other Miscellaneous Purchased Services		1,525.00		1,525.00
Total Other Purchased Services	\$6,674.29	\$239,444.64		\$246,118.93
600 Supplies				
610 General Supplies	67,743.91	68,151.31		135,895.22
640 Books and Periodicals	13,786.42	16,174.55		29,960.97
650 Supplies & Fees – Technology Related	29,090.94	17,404.50		46,495.44
Total Supplies	\$110,621.27	\$101,730.36		\$212,351.63
800 Other Objects				
810 Dues and Fees	80.00	8,848.00		8,928.00
Total Other Objects	\$80.00	\$8,848.00		\$8,928.00
Total 1100 Regular Programs – Elementary / Secondary	\$5,442,257.99	\$4,724,392.47	\$264,842.72	\$10,431,493.18

.EA : 116191503 Central Columbia SD

Printed 10/20/2017 2:13:09 PM

Page - 3 of 21

General Fund (10)	Elementary	Secondary	Federal	Total
1110 Regular Programs				
100 Personnel Services – Salaries				
100 Personnel Services – Salaries	3,258,525.01	2,962,113.59		6,220,638.60
Total Personnel Services – Salaries	\$3,258,525.01	\$2,962,113.59		\$6,220,638.60
200 Personnel Services – Employee Benefits				
210 Group Insurance – Contracted Provider	720,348.74	259,032.15		979,380.89
220 Social Security Contributions	259,186.03	219,913.23		479,099.26
230 PSERS Retirement Contributions	1,039,035.24	894,065.93		1,933,101.17
250 Unemployment Compensation	2,917.24	(8,032.80)		(5,115.56)
260 Workers' Compensation	17,015.39	13,951.94		30,967.33
Total Personnel Services – Employee Benefits	\$2,038,502.64	\$1,378,930.45		\$3,417,433.09
300 Purchased Professional and Technical Services				
322 Professional Educational Services – Ius	4,534.75	4,534.75		9,069.50
324 Professional Educational Services – Employee Training and Development Services	266.00	266.00		532.00
329 Professional Educational Services – Other	750.00			750.00
Total Purchased Professional and Technical Services	\$5,550.75	\$4,800.75		\$10,351.50
400 Purchased Property Services				
430 Repairs and Maintenance Services	811.00	3,386.30		4,197.30
440 Rentals	21,493.03	25,138.38		46,631.41
Total Purchased Property Services	\$22,304.03	\$28,524.68		\$50,828.71
500 Other Purchased Services				
510 Student Transportation Services	4,709.06	10,577.09		15,286.15
561 Tuition To Other School Districts Within the State		7,341.90		7,341.90
562 Tuition To Pennsylvania Charter Schools		213,739.98		213,739.98
567 Tuition To Approved Private Schools (APS) and PA Chartered Schools for the Deaf and Blind	150.00	989.11		1,139.11
568 Tuition To Private Residential Rehabilitative Institutions (PRRI) [In-State] and Detention Centers	1,665.23	1,665.22		3,330.45
569 Tuition – Other	150.00	150.00		300.00
580 Travel		3,456.34		3,456.34
599 Other Miscellaneous Purchased Services		1,525.00		1,525.00
Total Other Purchased Services	\$6,674.29	\$238,444.64		\$246,118.93
600 Supplies				
610 General Supplies	67,743.91	68,151.31		135,895.22
640 Books and Periodicals	13,786.42	16,174.55		29,960.97
650 Supplies & Fees – Technology Related	29,090.94	17,404.50		46,495.44
Total Supplies	\$110,621.27	\$101,730.36		\$212,351.63
800 Other Objects				
810 Dues and Fees	80.00	8,848.00		8,928.00
Total Other Objects	\$80.00	\$8,848.00		\$8,928.00
Total 1110 Regular Programs	\$5,442,257.99	\$4,724,392.47		\$10,166,650.46

General Fund (10)

	<u>Elementary</u>	<u>Secondary</u>	<u>Federal</u>	<u>Total</u>
1190 Federally-Funded Regular Programs				
100 Personnel Services – Salaries				
100 Personnel Services – Salaries			264,842.72	264,842.72
Total Personnel Services – Salaries			\$264,842.72	\$264,842.72
Total 1190 Federally-Funded Regular Programs			\$264,842.72	\$264,842.72

General Fund (10)				
1200 Special Programs – Elementary / Secondary	Elementary	Secondary	Federal	Total
100 Personnel Services – Salaries				
100 Personnel Services – Salaries	542,443.65	538,339.90	275,677.31	1,356,460.86
Total Personnel Services – Salaries	\$542,443.65	\$538,339.90	\$275,677.31	\$1,356,460.86
200 Personnel Services – Employee Benefits				
210 Group Insurance – Contracted Provider	108,054.81	136,111.28	36,861.05	281,027.14
220 Social Security Contributions	50,025.60	43,825.99	5,846.85	99,698.44
230 PSERS Retirement Contributions	196,943.96	179,070.20	23,965.95	399,980.11
250 Unemployment Compensation	1,113.60	734.18	161.87	2,009.65
260 Workers' Compensation	3,000.69	2,795.27	755.81	6,551.77
Total Personnel Services – Employee Benefits	\$359,138.66	\$362,536.92	\$67,591.53	\$789,267.11
300 Purchased Professional and Technical Services				
322 Professional Educational Services – Ius	191,104.91	191,104.91		382,209.82
323 Professional Educational Services – Other Educational Agencies	154,497.42	154,497.42		308,994.84
324 Professional Educational Services – Employee Training and Development Services			100.00	100.00
329 Professional Educational Services – Other	10,596.25	10,596.25	3,633.00	24,825.50
330 Other Professional Services	800.00	800.00		1,600.00
Total Purchased Professional and Technical Services	\$356,998.58	\$356,998.58	\$3,733.00	\$717,730.16
400 Purchased Property Services				
430 Repairs and Maintenance Services	25.80	25.80	450.00	501.60
Total Purchased Property Services	\$25.80	\$25.80	\$450.00	\$501.60
500 Other Purchased Services				
510 Student Transportation Services	332.70	298.85		631.55
580 Travel	1,264.15	1,473.37		2,737.52
594 IU Payment By Withholding for Institutionalized Children's Programs – Special Classes	117.59	117.58		235.17
Total Other Purchased Services	\$1,714.44	\$1,889.80		\$3,604.24
600 Supplies				
610 General Supplies	5,544.82	3,015.93	1,868.44	10,429.19
Total Supplies	\$5,544.82	\$3,015.93	\$1,868.44	\$10,429.19
800 Other Objects				
810 Dues and Fees		800.00		800.00
Total Other Objects		\$800.00		\$800.00
Total 1200 Special Programs – Elementary / Secondary	\$1,265,865.95	\$1,263,606.93	\$349,320.28	\$2,878,793.16

_EA : 116191503 Central Columbia SD

Printed 10/20/2017 2:13:09 PM

Page - 6 of 21

General Fund (10)				
1210 Life Skills Support	Elementary	Secondary	Federal	Total
100 Personnel Services – Salaries				
100 Personnel Services – Salaries	82,555.91	132,550.64	75,919.30	291,025.85
Total Personnel Services – Salaries	\$82,555.91	\$132,550.64	\$75,919.30	\$291,025.85
200 Personnel Services – Employee Benefits				
210 Group Insurance – Contracted Provider	27,359.91	35,602.77	8,010.02	70,972.70
220 Social Security Contributions	8,240.78	11,340.54	1,515.02	21,096.34
230 PSERS Retirement Contributions	32,642.53	46,498.69	5,885.41	85,026.63
250 Unemployment Compensation	227.35	286.38	16.72	530.45
260 Workers' Compensation	481.42	731.91	192.27	1,405.60
Total Personnel Services – Employee Benefits	\$68,951.99	\$94,460.29	\$15,619.44	\$179,031.72
300 Purchased Professional and Technical Services				
322 Professional Educational Services – Ius	2,113.58	2,113.58		4,227.16
330 Other Professional Services	800.00	800.00		1,600.00
Total Purchased Professional and Technical Services	\$2,913.58	\$2,913.58		\$5,827.16
500 Other Purchased Services				
510 Student Transportation Services	121.85	88.00		209.85
580 Travel	150.75	150.75		301.50
Total Other Purchased Services	\$272.60	\$238.75		\$511.35
600 Supplies				
610 General Supplies	1,561.08	2,496.09	1,384.16	5,441.33
Total Supplies	\$1,561.08	\$2,496.09	\$1,384.16	\$5,441.33
Total 1210 Life Skills Support	\$156,255.16	\$232,659.35	\$92,922.90	\$481,837.41

_EA : 116191503 Central Columbia SD

Printed 10/20/2017 2:13:09 PM

Page - 7 of 21

General Fund (10)				
	Elementary	Secondary	Federal	Total
1220 Sensory Support				
100 Personnel Services – Salaries				
100 Personnel Services – Salaries	14,675.20	28,280.25		42,955.45
Total Personnel Services – Salaries	\$14,675.20	\$28,280.25		\$42,955.45
200 Personnel Services – Employee Benefits				
210 Group Insurance – Contracted Provider	58.35	451.78	57.90	568.03
220 Social Security Contributions	1,122.70	2,085.58		3,208.28
230 PSERS Retirement Contributions	4,255.00	8,492.52		12,747.52
250 Unemployment Compensation	40.93	62.41		103.34
260 Workers' Compensation	70.81	136.56		207.37
Total Personnel Services – Employee Benefits	\$5,547.79	\$11,228.85	\$57.90	\$16,834.54
300 Purchased Professional and Technical Services				
322 Professional Educational Services – Ius	111,747.21	111,747.21		223,494.42
323 Professional Educational Services – Other Educational Agencies	31,238.00	31,238.00		62,476.00
324 Professional Educational Services – Employee Training and Development Services			100.00	100.00
Total Purchased Professional and Technical Services	\$142,985.21	\$142,985.21	\$100.00	\$286,070.42
400 Purchased Property Services				
430 Repairs and Maintenance Services	25.80	25.80	450.00	501.60
Total Purchased Property Services	\$25.80	\$25.80	\$450.00	\$501.60
600 Supplies				
610 General Supplies	1,779.97			1,779.97
Total Supplies	\$1,779.97			\$1,779.97
Total 1220 Sensory Support	\$165,013.97	\$182,520.11	\$607.90	\$348,141.98

_EA : 116191503 Central Columbia SD

Printed 10/20/2017 2:13:09 PM

Page - 8 of 21

General Fund (10)	Elementary	Secondary	Federal	Total
1230 Emotional Support				
100 Personnel Services – Salaries				
100 Personnel Services – Salaries	20,632.38		26,308.52	46,940.90
Total Personnel Services – Salaries	\$20,632.38		\$26,308.52	\$46,940.90
200 Personnel Services – Employee Benefits				
210 Group Insurance – Contracted Provider	10,892.59		3,636.14	14,528.73
220 Social Security Contributions	2,990.48		521.00	3,511.48
230 PSERS Retirement Contributions	10,437.40		2,111.77	12,549.17
250 Unemployment Compensation	124.21			124.21
260 Workers' Compensation	158.80		67.95	226.75
Total Personnel Services – Employee Benefits	\$24,603.48		\$6,336.86	\$30,940.34
300 Purchased Professional and Technical Services				
322 Professional Educational Services – Ius	54,360.62	54,360.62		108,721.24
323 Professional Educational Services – Other Educational Agencies	102,625.15	102,625.15		205,250.30
Total Purchased Professional and Technical Services	\$156,985.77	\$156,985.77		\$313,971.54
500 Other Purchased Services				
580 Travel	817.72			817.72
Total Other Purchased Services	\$817.72			\$817.72
600 Supplies				
610 General Supplies	142.33	142.32		284.65
Total Supplies	\$142.33	\$142.32		\$284.65
Total 1230 Emotional Support	\$203,181.68	\$157,128.09	\$32,645.38	\$392,955.15

General Fund (10)				
1240 Academic Support	Elementary	Secondary	Federal	Total
100 Personnel Services – Salaries				
100 Personnel Services – Salaries	422,559.80	375,488.66	151,594.37	949,642.83
Total Personnel Services – Salaries	\$422,559.80	\$375,488.66	\$151,594.37	\$949,642.83
200 Personnel Services – Employee Benefits				
210 Group Insurance – Contracted Provider	69,185.69	99,498.50	17,522.11	186,206.30
220 Social Security Contributions	36,990.72	29,718.97	3,247.72	69,957.41
230 PSERS Retirement Contributions	147,045.62	121,515.58	13,409.33	281,970.53
250 Unemployment Compensation	702.32	366.60	105.96	1,174.88
260 Workers' Compensation	2,264.21	1,901.36	421.45	4,587.02
Total Personnel Services – Employee Benefits	\$256,188.56	\$253,001.01	\$34,706.57	\$543,896.14
300 Purchased Professional and Technical Services				
322 Professional Educational Services – Ius	22,883.50	22,883.50		45,767.00
329 Professional Educational Services – Other			3,633.00	3,633.00
Total Purchased Professional and Technical Services	\$22,883.50	\$22,883.50	\$3,633.00	\$49,400.00
500 Other Purchased Services				
510 Student Transportation Services	210.85	210.85		421.70
580 Travel	295.68	1,322.62		1,618.30
Total Other Purchased Services	\$506.53	\$1,533.47		\$2,040.00
600 Supplies				
610 General Supplies	2,034.10	350.19	100.00	2,484.29
Total Supplies	\$2,034.10	\$350.19	\$100.00	\$2,484.29
800 Other Objects				
810 Dues and Fees		800.00		800.00
Total Other Objects		\$800.00		\$800.00
Total 1240 Academic Support	\$704,172.49	\$654,056.83	\$190,033.94	\$1,548,263.26

General Fund (10)	Elementary	Secondary	Federal	Total
1241 Learning Support – Public				
100 Personnel Services – Salaries				
100 Personnel Services – Salaries	359,995.42	338,478.18	151,594.37	850,067.97
Total Personnel Services – Salaries	\$359,995.42	\$338,478.18	\$151,594.37	\$850,067.97
200 Personnel Services – Employee Benefits				
210 Group Insurance – Contracted Provider	54,333.48	91,301.18	17,522.11	163,156.77
220 Social Security Contributions	32,238.60	26,921.76	3,247.72	62,408.08
230 PSERS Retirement Contributions	128,257.55	110,401.36	13,409.33	252,068.24
250 Unemployment Compensation	661.36	346.12	105.96	1,113.44
260 Workers' Compensation	1,961.98	1,722.61	421.45	4,106.04
Total Personnel Services – Employee Benefits	\$217,452.97	\$230,693.03	\$34,706.57	\$482,852.57
300 Purchased Professional and Technical Services				
322 Professional Educational Services – Bus	22,883.50	22,883.50		45,767.00
329 Professional Educational Services – Other			3,633.00	3,633.00
Total Purchased Professional and Technical Services	\$22,883.50	\$22,883.50	\$3,633.00	\$49,400.00
500 Other Purchased Services				
580 Travel	220.00	1,296.94		1,516.94
Total Other Purchased Services	\$220.00	\$1,296.94		\$1,516.94
600 Supplies				
610 General Supplies	1,635.41	76.50	100.00	1,811.91
Total Supplies	\$1,635.41	\$76.50	\$100.00	\$1,811.91
Total 1241 Learning Support – Public	\$602,187.30	\$593,428.15	\$190,033.94	\$1,385,649.39

.EA : 116191503 Central Columbia SD

Printed 10/20/2017 2:13:09 PM

Page - 11 of 21

General Fund (10)				
1243 Gifted Support				
	<u>Elementary</u>	<u>Secondary</u>	<u>Federal</u>	<u>Total</u>
100 Personnel Services – Salaries				
100 Personnel Services – Salaries	62,564.38	37,010.48		99,574.86
Total Personnel Services – Salaries	\$62,564.38	\$37,010.48		\$99,574.86
200 Personnel Services – Employee Benefits				
210 Group Insurance – Contracted Provider	14,852.21	8,197.32		23,049.53
220 Social Security Contributions	4,752.12	2,797.21		7,549.33
230 PSERS Retirement Contributions	18,788.07	11,114.22		29,902.29
250 Unemployment Compensation	40.96	20.48		61.44
260 Workers' Compensation	302.23	178.75		480.98
Total Personnel Services – Employee Benefits	\$38,735.59	\$22,307.98		\$61,043.57
500 Other Purchased Services				
510 Student Transportation Services	210.85	210.85		421.70
580 Travel	75.68	25.68		101.36
Total Other Purchased Services	\$286.53	\$236.53		\$523.06
600 Supplies				
610 General Supplies	398.69	273.69		672.38
Total Supplies	\$398.69	\$273.69		\$672.38
800 Other Objects				
810 Dues and Fees		800.00		800.00
Total Other Objects		\$800.00		\$800.00
Total 1243 Gifted Support	\$101,985.19	\$60,628.68		\$162,613.87

General Fund (10)				
1260 Physical Support	Elementary	Secondary	Federal	Total
100 Personnel Services -- Salaries				
100 Personnel Services -- Salaries	2,020.36	2,020.35	9,365.87	13,406.58
Total Personnel Services -- Salaries	\$2,020.36	\$2,020.35	\$9,365.87	\$13,406.58
200 Personnel Services -- Employee Benefits				
210 Group Insurance -- Contracted Provider	14.70	14.70	521.84	551.24
220 Social Security Contributions	406.98	406.97	196.79	1,010.74
230 PSERS Retirement Contributions	1,440.06	1,440.06	1,055.53	3,935.65
250 Unemployment Compensation	16.93	16.93	22.41	56.27
260 Workers' Compensation	19.48	19.47	25.79	64.74
Total Personnel Services -- Employee Benefits	\$1,898.15	\$1,898.13	\$1,822.36	\$5,618.64
300 Purchased Professional and Technical Services				
323 Professional Educational Services -- Other Educational Agencies	13,388.75	13,388.75		26,777.50
329 Professional Educational Services -- Other	10,596.25	10,596.25		21,192.50
Total Purchased Professional and Technical Services	\$23,985.00	\$23,985.00		\$47,970.00
600 Supplies				
610 General Supplies			384.28	384.28
Total Supplies			\$384.28	\$384.28
Total 1260 Physical Support	\$27,903.51	\$27,903.48	\$11,572.51	\$67,379.50

General Fund (10)

1270 Multi-Handicapped Support

300 Purchased Professional and Technical Services

323 Professional Educational Services – Other Educational Agencies

Total Purchased Professional and Technical Services

600 Supplies

610 General Supplies

Total Supplies

Total 1270 Multi-Handicapped Support

Elementary

Secondary

Federal

Total

7,245.52

7,245.52

14,491.04

\$7,245.52

\$7,245.52

\$14,491.04

27.34

27.33

54.67

\$27.34

\$27.33

\$54.67

\$7,272.86

\$7,272.85

\$14,545.71

.EA : 116191503 Central Columbia SD

Printed 10/20/2017 2:13:09 PM

Page - 14 of 21

General Fund (10)				
1290 Special Programs - Other Support	<u>Elementary</u>	<u>Secondary</u>	<u>Federal</u>	<u>Total</u>
100 <u>Personnel Services – Salaries</u>				
100 Personnel Services – Salaries			12,489.25	12,489.25
Total Personnel Services – Salaries			\$12,489.25	\$12,489.25
200 <u>Personnel Services – Employee Benefits</u>				
210 Group Insurance – Contracted Provider	543.57	543.53	7,113.04	8,200.14
220 Social Security Contributions	273.94	273.93	366.32	914.19
230 PSERS Retirement Contributions	1,123.35	1,123.35	1,503.91	3,750.61
250 Unemployment Compensation	1.86	1.86	16.78	20.50
260 Workers' Compensation	5.97	5.97	48.35	60.29
Total Personnel Services – Employee Benefits	\$1,948.69	\$1,948.64	\$9,048.40	\$12,945.73
500 <u>Other Purchased Services</u>				
594 IU Payment By Withholding for Institutionalized Children's Programs – Special Classes	117.59	117.58		235.17
Total Other Purchased Services	\$117.59	\$117.58		\$235.17
Total 1290 Special Programs - Other Support	\$2,066.28	\$2,066.22	\$21,537.65	\$25,670.15

.EA : 116191503 Central Columbia SD

Printed 10/20/2017 2:13:09 PM

Page - 15 of 21

General Fund (10)	Elementary	Secondary	Federal	Total
1300 Vocational Education				
100 Personnel Services – Salaries				
100 Personnel Services – Salaries		652,072.26		652,072.26
Total Personnel Services – Salaries		\$652,072.26		\$652,072.26
200 Personnel Services – Employee Benefits				
210 Group Insurance – Contracted Provider		134,408.36		134,408.36
220 Social Security Contributions		47,913.36		47,913.36
230 PSERS Retirement Contributions		195,817.78		195,817.78
250 Unemployment Compensation		498.49		498.49
260 Workers' Compensation		3,149.21		3,149.21
Total Personnel Services – Employee Benefits		\$381,787.20		\$381,787.20
400 Purchased Property Services				
430 Repairs and Maintenance Services		993.00		993.00
Total Purchased Property Services		\$993.00		\$993.00
500 Other Purchased Services				
510 Student Transportation Services		8,069.00		8,069.00
564 Tuition To Career and Technology Centers		1,048,854.00		1,048,854.00
580 Travel		1,712.85		1,712.85
Total Other Purchased Services		\$1,058,635.85		\$1,058,635.85
600 Supplies				
610 General Supplies		45,516.02		45,516.02
640 Books and Periodicals		178.92		178.92
650 Supplies & Fees – Technology Related		1,405.00		1,405.00
Total Supplies		\$47,099.94		\$47,099.94
800 Other Objects				
810 Dues and Fees		4,450.00		4,450.00
Total Other Objects		\$4,450.00		\$4,450.00
Total 1300 Vocational Education		\$2,145,038.25		\$2,145,038.25

General Fund (10)	Elementary	Secondary	Federal	Total
1400 Other Instructional Programs – Elementary / Secondary				
100 Personnel Services – Salaries				
100 Personnel Services – Salaries	956.25	44,870.96		45,827.21
Total Personnel Services – Salaries	\$956.25	\$44,870.96		\$45,827.21
200 Personnel Services – Employee Benefits				
210 Group Insurance – Contracted Provider		13,772.94		13,772.94
220 Social Security Contributions	103.77	3,256.54		3,360.31
230 PSERS Retirement Contributions	407.30	13,354.62		13,761.92
250 Unemployment Compensation	0.66	41.26		41.92
260 Workers' Compensation	6.56	214.71		221.27
Total Personnel Services – Employee Benefits	\$518.29	\$30,640.07		\$31,158.36
500 Other Purchased Services				
562 Tuition To Pennsylvania Charter Schools		118,654.33		118,654.33
Total Other Purchased Services		\$118,654.33		\$118,654.33
Total 1400 Other Instructional Programs – Elementary / Secondary	\$1,474.54	\$194,165.36		\$195,639.90

General Fund (10)	Elementary	Secondary	Federal	Total
1420 Summer School				
100 Personnel Services -- Salaries				
100 Personnel Services -- Salaries	112.50	1,662.50		1,775.00
Total Personnel Services -- Salaries	\$112.50	\$1,662.50		\$1,775.00
200 Personnel Services -- Employee Benefits				
220 Social Security Contributions	39.21	92.88		132.09
230 PSERS Retirement Contributions	153.91	379.13		533.04
260 Workers' Compensation	2.48	6.09		8.57
Total Personnel Services -- Employee Benefits	\$195.60	\$478.10		\$673.70
Total 1420 Summer School	\$308.10	\$2,140.60		\$2,448.70

General Fund (10)				
1430 Homebound Instruction	<u>Elementary</u>	<u>Secondary</u>	<u>Federal</u>	<u>Total</u>
100 <u>Personnel Services – Salaries</u>				
100 Personnel Services – Salaries	843.75	1,362.50		2,206.25
Total Personnel Services – Salaries	\$843.75	\$1,362.50		\$2,206.25
200 <u>Personnel Services – Employee Benefits</u>				
220 Social Security Contributions	64.56	104.25		168.81
230 PSERS Retirement Contributions	253.39	409.17		662.56
250 Unemployment Compensation	0.66	0.31		0.97
260 Workers' Compensation	4.08	6.58		10.66
Total Personnel Services – Employee Benefits	\$322.69	\$520.31		\$843.00
Total 1430 Homebound Instruction	\$1,166.44	\$1,882.81		\$3,049.25

.EA : 116191503 Central Columbia SD

Printed 10/20/2017 2:13:09 PM

Page - 19 of 21

General Fund (10)	Elementary	Secondary	Federal	Total
1440 Alternative Regular Education Programs				
100 Personnel Services – Salaries				
100 Personnel Services – Salaries		41,845.96		41,845.96
Total Personnel Services – Salaries		\$41,845.96		\$41,845.96
200 Personnel Services – Employee Benefits				
210 Group Insurance – Contracted Provider		13,772.94		13,772.94
220 Social Security Contributions		3,059.41		3,059.41
230 PSERS Retirement Contributions		12,566.32		12,566.32
250 Unemployment Compensation		40.95		40.95
260 Workers' Compensation		202.04		202.04
Total Personnel Services – Employee Benefits		\$29,641.66		\$29,641.66
500 Other Purchased Services				
562 Tuition To Pennsylvania Charter Schools		118,654.33		118,654.33
Total Other Purchased Services		\$118,654.33		\$118,654.33
Total 1440 Alternative Regular Education Programs		\$190,141.95		\$190,141.95

General Fund (10)	Elementary	Secondary	Federal	Total
1442 Alternative Education Programs				
100 Personnel Services – Salaries				
100 Personnel Services – Salaries		41,845.96		41,845.96
Total Personnel Services – Salaries		\$41,845.96		\$41,845.96
200 Personnel Services – Employee Benefits				
210 Group Insurance – Contracted Provider		13,772.94		13,772.94
220 Social Security Contributions		3,059.41		3,059.41
230 PSERS Retirement Contributions		12,566.32		12,566.32
250 Unemployment Compensation		40.95		40.95
260 Workers' Compensation		202.04		202.04
Total Personnel Services – Employee Benefits		\$29,641.66		\$29,641.66
500 Other Purchased Services				
562 Tuition To Pennsylvania Charter Schools		118,654.33		118,654.33
Total Other Purchased Services		\$118,654.33		\$118,654.33
Total 1442 Alternative Education Programs		\$190,141.95		\$190,141.95

General Fund (10)	<u>Elementary</u>	<u>Secondary</u>	<u>Federal</u>	<u>Total</u>
1500 Nonpublic School Programs				
300 <u>Purchased Professional and Technical Services</u>				
323 Professional Educational Services – Other Educational Agencies			10,130.00	10,130.00
Total Purchased Professional and Technical Services			\$10,130.00	\$10,130.00
Total 1500 Nonpublic School Programs			\$10,130.00	\$10,130.00

General Fund (10)		
2000 Support Services		Total
100 Personnel Services – Salaries		
100 Personnel Services – Salaries		3,231,059.82
Total Personnel Services – Salaries		\$3,231,059.82
200 Personnel Services – Employee Benefits		
210 Group Insurance – Contracted Provider		1,410,462.42
220 Social Security Contributions		237,830.04
230 PSERS Retirement Contributions		959,495.61
240 Tuition Reimbursement		77,920.50
250 Unemployment Compensation		2,934.59
260 Workers' Compensation		15,629.16
Total Personnel Services – Employee Benefits		\$2,704,272.32
300 Purchased Professional and Technical Services		
322 Professional Educational Services – Ius		4,627.12
323 Professional Educational Services – Other Educational Agencies		190,225.40
324 Professional Educational Services – Employee Training and Development Services		14,246.77
330 Other Professional Services		124,114.63
340 Technical Services		8,390.65
390 Other Purchased Professional and Technical Services		4,965.66
Total Purchased Professional and Technical Services		\$346,570.23
400 Purchased Property Services		
410 Cleaning Services		39,598.47
420 Utility Services		446,474.37
430 Repairs and Maintenance Services		238,691.59
440 Rentals		18,843.11
460 Extermination Services		4,124.00
Total Purchased Property Services		\$747,731.54
500 Other Purchased Services		
510 Student Transportation Services		323.85
513 Contracted Carriers		1,200,204.35
516 Student Transportation Services From the IU		23,732.48
520 Insurance – General		325.00
523 General Property and Liability Insurance		96,812.00
530 Communications		58,775.81
549 Other Advertising/Public Relations		8,162.21
580 Travel		19,021.81
599 Other Miscellaneous Purchased Services		3,854.09
Total Other Purchased Services		\$1,411,211.60
600 Supplies		
610 General Supplies		233,650.56
620 Energy		80,241.78
630 Food		1,414.12
640 Books and Periodicals		59,758.40
650 Supplies & Fees – Technology Related		273,112.47

General Fund (10)

2000 Support Services

Total

Total Supplies	\$648,177.33
700 Property	
752 Capital Equipment – Original and Additional	6,390.00
Total Property	\$6,390.00
800 Other Objects	
810 Dues and Fees	113,335.52
Total Other Objects	\$113,335.52
Total 2000 Support Services	\$9,208,748.36

.EA : 116191503 Central Columbia SD

Printed 10/20/2017 2:13:11 PM

Page - 3 of 48

General Fund (10)				
2100 Support Services – Students	Elementary	Secondary	Federal	Total
100 Personnel Services – Salaries				
100 Personnel Services – Salaries	234,476.66	278,818.97		513,295.63
Total Personnel Services – Salaries	\$234,476.66	\$278,818.97		\$513,295.63
200 Personnel Services – Employee Benefits				
210 Group Insurance – Contracted Provider	54,343.95	54,397.33		108,741.28
220 Social Security Contributions	17,385.65	20,710.39		38,096.04
230 PSERS Retirement Contributions	70,413.32	83,729.12		154,142.44
250 Unemployment Compensation	184.28	224.84		409.12
260 Workers' Compensation	1,132.59	1,346.57		2,479.16
Total Personnel Services – Employee Benefits	\$143,459.79	\$160,408.25		\$303,868.04
300 Purchased Professional and Technical Services				
322 Professional Educational Services – Ius	516.85	516.85		1,533.70
323 Professional Educational Services – Other Educational Agencies	93,902.70	93,902.70		187,805.40
324 Professional Educational Services – Employee Training and Development Services			350.00	350.00
330 Other Professional Services				74,261.50
Total Purchased Professional and Technical Services	\$94,419.55	\$94,419.55	\$350.00	\$263,950.60
500 Other Purchased Services				
510 Student Transportation Services	323.85			323.85
580 Travel	305.00	305.00		610.00
599 Other Miscellaneous Purchased Services		1,218.00		1,218.00
Total Other Purchased Services	\$628.85	\$1,523.00		\$2,151.85
600 Supplies				
610 General Supplies	5,150.15	752.73		5,902.88
Total Supplies	\$5,150.15	\$752.73		\$5,902.88
800 Other Objects				
810 Dues and Fees	189.00	189.00		378.00
Total Other Objects	\$189.00	\$189.00		\$378.00
Total 2100 Support Services – Students	\$478,324.00	\$536,111.50	\$350.00	\$1,089,547.00

General Fund (10)	Elementary	Secondary	Federal	Total
2120 Guidance Services				
100 Personnel Services – Salaries				
100 Personnel Services – Salaries	191,496.28	235,838.60		427,334.88
Total Personnel Services – Salaries	\$191,496.28	\$235,838.60		\$427,334.88
200 Personnel Services – Employee Benefits				
210 Group Insurance – Contracted Provider	50,353.33	50,406.71		100,760.04
220 Social Security Contributions	14,114.33	17,439.07		31,553.40
230 PSERS Retirement Contributions	57,506.33	70,822.14		128,328.47
250 Unemployment Compensation	143.33	183.90		327.23
260 Workers' Compensation	925.04	1,139.03		2,064.07
Total Personnel Services – Employee Benefits	\$123,042.36	\$139,990.85		\$263,033.21
500 Other Purchased Services				
510 Student Transportation Services	323.85			323.85
580 Travel	305.00	305.00		610.00
599 Other Miscellaneous Purchased Services		1,218.00		1,218.00
Total Other Purchased Services	\$628.85	\$1,523.00		\$2,151.85
600 Supplies				
610 General Supplies	2,155.93	752.73		2,908.66
Total Supplies	\$2,155.93	\$752.73		\$2,908.66
800 Other Objects				
810 Dues and Fees	189.00	189.00		378.00
Total Other Objects	\$189.00	\$189.00		\$378.00
Total 2120 Guidance Services	\$317,512.42	\$378,294.18		\$695,806.60

General Fund (10)				
2140 Psychological Services	Elementary	Secondary	Federal	Total
100 Personnel Services – Salaries				
100 Personnel Services – Salaries	42,980.38	42,980.37		85,960.75
Total Personnel Services – Salaries	\$42,980.38	\$42,980.37		\$85,960.75
200 Personnel Services – Employee Benefits				
210 Group Insurance – Contracted Provider	3,990.62	3,990.62		7,981.24
220 Social Security Contributions	3,271.32	3,271.32		6,542.64
230 PSERS Retirement Contributions	12,906.99	12,906.98		25,813.97
250 Unemployment Compensation	40.95	40.94		81.89
260 Workers' Compensation	207.55	207.54		415.09
Total Personnel Services – Employee Benefits	\$20,417.43	\$20,417.40		\$40,834.83
300 Purchased Professional and Technical Services				
324 Professional Educational Services – Employee Training and Development Services			350.00	350.00
Total Purchased Professional and Technical Services			\$350.00	\$350.00
600 Supplies				
610 General Supplies	1,822.23			1,822.23
Total Supplies	\$1,822.23			\$1,822.23
Total 2140 Psychological Services	\$65,220.04	\$63,397.77	\$350.00	\$128,967.81

General Fund (10)

	<u>Elementary</u>	<u>Secondary</u>	<u>Federal</u>	<u>Total</u>
2150 Speech Pathology and Audiology Services				
300 Purchased Professional and Technical Services				
322 Professional Educational Services – Ius	516.85	516.85		1,033.70
323 Professional Educational Services – Other Educational Agencies	93,902.70	93,902.70		187,805.40
Total Purchased Professional and Technical Services	\$94,419.55	\$94,419.55		\$188,839.10
600 Supplies				
610 General Supplies	1,171.99			1,171.99
Total Supplies	\$1,171.99			\$1,171.99
Total 2150 Speech Pathology and Audiology Services	\$95,591.54	\$94,419.55		\$190,011.09

General Fund (10)

2160 Social Work Services

Elementary

Secondary

Federal

Total

300 Purchased Professional and Technical Services

322 Professional Educational Services – lus

330 Other Professional Services

500.00

74,261.50

Total Purchased Professional and Technical Services

\$74,761.50

Total 2160 Social Work Services

\$74,761.50

General Fund (10)				
2200 Support Services – Instructional Staff	Elementary	Secondary	Federal	Total
100 Personnel Services – Salaries				
100 Personnel Services – Salaries	439,916.79	417,271.28		857,188.07
Total Personnel Services – Salaries	\$439,916.79	\$417,271.28		\$857,188.07
200 Personnel Services – Employee Benefits				
210 Group Insurance – Contracted Provider	78,353.79	76,755.93		155,109.72
220 Social Security Contributions	32,507.04	31,054.05		63,561.09
230 PSERS Retirement Contributions	127,499.97	122,277.46		249,777.43
240 Tuition Reimbursement	38,960.25	38,960.25		77,920.50
250 Unemployment Compensation	427.67	306.81		734.48
260 Workers' Compensation	2,127.95	2,019.15		4,147.10
Total Personnel Services – Employee Benefits	\$279,876.67	\$271,373.65		\$551,250.32
300 Purchased Professional and Technical Services				
322 Professional Educational Services – Ius	1,546.71	1,546.71		3,093.42
323 Professional Educational Services – Other Educational Agencies	1,210.00	1,210.00		2,420.00
324 Professional Educational Services – Employee Training and Development Services	2,103.56	2,103.55	7,982.40	12,189.51
340 Technical Services	3,997.83	3,997.82		7,995.65
Total Purchased Professional and Technical Services	\$8,858.10	\$8,858.08	\$7,982.40	\$25,698.58
400 Purchased Property Services				
430 Repairs and Maintenance Services	14,083.28	14,083.28		28,166.56
Total Purchased Property Services	\$14,083.28	\$14,083.28		\$28,166.56
500 Other Purchased Services				
530 Communications	19,380.27	19,380.27		38,760.54
580 Travel	935.23	935.24	5,013.88	6,884.35
Total Other Purchased Services	\$20,315.50	\$20,315.51	\$5,013.88	\$45,644.89
600 Supplies				
610 General Supplies	3,675.34	2,965.88		6,641.22
630 Food	707.06	707.06		1,414.12
640 Books and Periodicals	23,733.94	36,024.46		59,758.40
650 Supplies & Fees – Technology Related	96,698.77	93,271.72		189,970.49
Total Supplies	\$124,815.11	\$132,969.12		\$257,784.23
800 Other Objects				
810 Dues and Fees	354.50	354.50		709.00
Total Other Objects	\$354.50	\$354.50		\$709.00
Total 2200 Support Services – Instructional Staff	\$888,219.95	\$865,225.42	\$12,996.28	\$1,766,441.65

_EA : 116191503 Central Columbia SD

Printed 10/20/2017 2:13:11 PM

Page - 9 of 48

General Fund (10)				
2220 Technology Support Services	Elementary	Secondary	Federal	Total
100 Personnel Services – Salaries				
100 Personnel Services – Salaries	123,791.10	123,791.09		247,582.19
Total Personnel Services – Salaries	\$123,791.10	\$123,791.09		\$247,582.19
200 Personnel Services – Employee Benefits				
210 Group Insurance – Contracted Provider	23,182.73	23,182.71		46,365.44
220 Social Security Contributions	9,379.95	9,379.94		18,759.89
230 PSERS Retirement Contributions	37,174.44	37,174.44		74,348.88
250 Unemployment Compensation	82.79	82.78		165.57
260 Workers' Compensation	597.89	597.89		1,195.78
Total Personnel Services – Employee Benefits	\$70,417.80	\$70,417.76		\$140,835.56
300 Purchased Professional and Technical Services				
324 Professional Educational Services – Employee Training and Development Services	659.00	659.00		1,318.00
Total Purchased Professional and Technical Services	\$659.00	\$659.00		\$1,318.00
400 Purchased Property Services				
430 Repairs and Maintenance Services	14,083.28	14,083.28		28,166.56
Total Purchased Property Services	\$14,083.28	\$14,083.28		\$28,166.56
500 Other Purchased Services				
530 Communications	19,380.27	19,380.27		38,760.54
580 Travel	502.83	502.83		1,005.66
Total Other Purchased Services	\$19,883.10	\$19,883.10		\$39,766.20
600 Supplies				
610 General Supplies	315.07	315.07		630.14
640 Books and Periodicals	13,604.27	25,984.01		39,588.28
650 Supplies & Fees – Technology Related	68,436.10	68,324.66		136,760.76
Total Supplies	\$82,355.44	\$94,623.74		\$176,979.18
Total 2220 Technology Support Services	\$311,189.72	\$323,457.97		\$634,647.69

General Fund (10)

	<u>Elementary</u>	<u>Secondary</u>	<u>Federal</u>	<u>Total</u>
2240 Computer-Assisted Instruction Support Services				
600 Supplies				
610 General Supplies	272.34	272.33		544.67
650 Supplies & Fees – Technology Related	25,600.50	22,138.18		47,738.68
Total Supplies	\$25,872.84	\$22,410.51		\$48,283.35
Total 2240 Computer-Assisted Instruction Support Services	\$25,872.84	\$22,410.51		\$48,283.35

General Fund (10)				
2250 School Library Services	Elementary	Secondary	Federal	Total
100 Personnel Services – Salaries				
100 Personnel Services – Salaries	172,762.95	141,264.16		314,027.11
Total Personnel Services – Salaries	\$172,762.95	\$141,264.16		\$314,027.11
200 Personnel Services – Employee Benefits				
210 Group Insurance – Contracted Provider	34,364.49	32,766.66		67,131.15
220 Social Security Contributions	12,495.89	10,368.41		22,864.30
230 PSERS Retirement Contributions	47,989.93	40,108.14		88,098.07
250 Unemployment Compensation	244.10	119.29		363.39
260 Workers' Compensation	834.32	682.36		1,516.68
Total Personnel Services – Employee Benefits	\$95,928.73	\$84,044.86		\$179,973.59
300 Purchased Professional and Technical Services				
324 Professional Educational Services – Employee Training and Development Services	57.50	57.50		115.00
Total Purchased Professional and Technical Services	\$57.50	\$57.50		\$115.00
500 Other Purchased Services				
580 Travel	21.50	21.50		43.00
Total Other Purchased Services	\$21.50	\$21.50		\$43.00
600 Supplies				
610 General Supplies	1,485.33	775.89		2,261.22
640 Books and Periodicals	5,957.27	5,868.05		11,825.32
650 Supplies & Fees – Technology Related	1,277.17	1,423.88		2,701.05
Total Supplies	\$8,719.77	\$8,067.82		\$16,787.59
Total 2250 School Library Services	\$277,490.45	\$233,455.84		\$510,946.29

EA : 116191503 Central Columbia SD

Printed 10/20/2017 2:13:11 PM

Page - 12 of 48

General Fund (10)				
2260 Instruction and Curriculum Development Services	Elementary	Secondary	Federal	Total
100 Personnel Services – Salaries				
100 Personnel Services – Salaries	124,458.88	124,458.86		248,917.74
Total Personnel Services – Salaries	\$124,458.88	\$124,458.86		\$248,917.74
200 Personnel Services – Employee Benefits				
210 Group Insurance – Contracted Provider	20,806.57	20,806.56		41,613.13
220 Social Security Contributions	9,239.95	9,239.94		18,479.89
230 PSERS Retirement Contributions	36,657.87	36,657.87		73,315.74
250 Unemployment Compensation	87.77	87.76		175.53
260 Workers' Compensation	604.23	604.21		1,208.44
Total Personnel Services – Employee Benefits	\$67,396.39	\$67,396.34		\$134,792.73
300 Purchased Professional and Technical Services				
322 Professional Educational Services – Ius	1,546.71	1,546.71		3,093.42
323 Professional Educational Services – Other Educational Agencies	1,210.00	1,210.00		2,420.00
324 Professional Educational Services – Employee Training and Development Services	200.00	200.00		400.00
340 Technical Services	3,997.83	3,997.82		7,995.65
Total Purchased Professional and Technical Services	\$6,954.54	\$6,954.53		\$13,909.07
500 Other Purchased Services				
580 Travel	410.90	410.91		821.81
Total Other Purchased Services	\$410.90	\$410.91		\$821.81
600 Supplies				
610 General Supplies	1,602.60	1,602.59		3,205.19
630 Food	707.06	707.06		1,414.12
640 Books and Periodicals	4,172.40	4,172.40		8,344.80
650 Supplies & Fees – Technology Related	1,385.00	1,385.00		2,770.00
Total Supplies	\$7,867.06	\$7,867.05		\$15,734.11
800 Other Objects				
810 Dues and Fees	354.50	354.50		709.00
Total Other Objects	\$354.50	\$354.50		\$709.00
Total 2260 Instruction and Curriculum Development Services	\$207,442.27	\$207,442.19		\$414,884.46

General Fund (10)				
2270 Instructional Staff Professional Development Services	<u>Elementary</u>	<u>Secondary</u>	<u>Federal</u>	<u>Total</u>
200 <u>Personnel Services – Employee Benefits</u>				
240 Tuition Reimbursement	38,960.25	38,960.25		77,920.50
Total Personnel Services – Employee Benefits	\$38,960.25	\$38,960.25		\$77,920.50
300 <u>Purchased Professional and Technical Services</u>				
324 Professional Educational Services – Employee Training and Development Services	1,187.06	1,187.05	7,982.40	10,356.51
Total Purchased Professional and Technical Services	\$1,187.06	\$1,187.05	\$7,982.40	\$10,356.51
500 <u>Other Purchased Services</u>				
580 Travel			5,013.88	5,013.88
Total Other Purchased Services			\$5,013.88	\$5,013.88
Total 2270 Instructional Staff Professional Development Services	\$40,147.31	\$40,147.30	\$12,996.28	\$93,290.89

General Fund (10)				
2290 Other Instructional Staff Services	<u>Elementary</u>	<u>Secondary</u>	<u>Federal</u>	<u>Total</u>
100 <u>Personnel Services – Salaries</u>				
100 Personnel Services – Salaries	18,903.86	27,757.17		46,661.03
Total Personnel Services – Salaries	\$18,903.86	\$27,757.17		\$46,661.03
200 <u>Personnel Services – Employee Benefits</u>				
220 Social Security Contributions	1,391.25	2,065.76		3,457.01
230 PSERS Retirement Contributions	5,677.73	8,337.01		14,014.74
250 Unemployment Compensation	13.01	16.98		29.99
260 Workers' Compensation	91.51	134.69		226.20
Total Personnel Services – Employee Benefits	\$7,173.50	\$10,554.44		\$17,727.94
Total 2290 Other Instructional Staff Services	\$26,077.36	\$38,311.61		\$64,388.97

General Fund (10)				
2300 Support Services – Administration	Elementary	Secondary	Federal	Total
100 Personnel Services – Salaries				
100 Personnel Services – Salaries	290,570.60	373,083.55		850,686.10
Total Personnel Services – Salaries	\$290,570.60	\$373,083.55		\$850,686.10
200 Personnel Services – Employee Benefits				
210 Group Insurance – Contracted Provider	53,457.92	51,783.41		876,049.71
220 Social Security Contributions	21,488.33	27,905.15		61,720.63
230 PSERS Retirement Contributions	87,252.74	112,019.82		257,535.34
250 Unemployment Compensation	218.21	248.51		543.48
260 Workers' Compensation	1,403.59	1,802.30		4,124.69
Total Personnel Services – Employee Benefits	\$163,820.79	\$193,759.19		\$1,199,973.85
300 Purchased Professional and Technical Services				
324 Professional Educational Services – Employee Training and Development Services				565.66
330 Other Professional Services				44,353.13
390 Other Purchased Professional and Technical Services				4,965.66
Total Purchased Professional and Technical Services				\$49,884.45
400 Purchased Property Services				
440 Rentals				18,109.11
Total Purchased Property Services				\$18,109.11
500 Other Purchased Services				
520 Insurance – General				325.00
549 Other Advertising/Public Relations				8,162.21
580 Travel	2,736.86	1,421.53		7,982.75
599 Other Miscellaneous Purchased Services		2,636.09		2,636.09
Total Other Purchased Services	\$2,736.86	\$4,057.62		\$19,106.05
600 Supplies				
610 General Supplies	1,086.07	7,529.89		21,921.15
Total Supplies	\$1,086.07	\$7,529.89		\$21,921.15
800 Other Objects				
810 Dues and Fees	1,440.25	1,596.75		109,931.95
Total Other Objects	\$1,440.25	\$1,596.75		\$109,931.95
Total 2300 Support Services – Administration	\$459,654.57	\$580,027.00		\$2,269,612.66

General Fund (10)				
2310 Board Services	Elementary	Secondary	Federal	Total
100 Personnel Services – Salaries				
100 Personnel Services – Salaries				2,499.90
Total Personnel Services – Salaries				\$2,499.90
200 Personnel Services – Employee Benefits				
210 Group Insurance – Contracted Provider				350,606.86
220 Social Security Contributions				187.20
230 PSERS Retirement Contributions				750.62
250 Unemployment Compensation				2.52
260 Workers' Compensation				11.96
Total Personnel Services – Employee Benefits				\$351,559.16
300 Purchased Professional and Technical Services				
324 Professional Educational Services – Employee Training and Development Services				450.66
330 Other Professional Services				21,750.00
Total Purchased Professional and Technical Services				\$22,200.66
500 Other Purchased Services				
520 Insurance – General				325.00
580 Travel				1,592.76
Total Other Purchased Services				\$1,917.76
600 Supplies				
610 General Supplies				5,706.09
Total Supplies				\$5,706.09
800 Other Objects				
810 Dues and Fees				11,349.00
Total Other Objects				\$11,349.00
Total 2310 Board Services				\$395,232.57

General Fund (10)	Elementary	Secondary	Federal	Total
2330 Tax Assessment and Collection Services				
300 <u>Purchased Professional and Technical Services</u>				
330 Other Professional Services				2,461.57
Total Purchased Professional and Technical Services				\$2,461.57
600 <u>Supplies</u>				
610 General Supplies				3,180.00
Total Supplies				\$3,180.00
Total 2330 Tax Assessment and Collection Services				\$5,641.57

General Fund (10)	<u>Elementary</u>	<u>Secondary</u>	<u>Federal</u>	<u>Total</u>
2340 Staff Relations and Negotiations Services				
200 Personnel Services – Employee Benefits				
210 Group Insurance – Contracted Provider				395,782.95
230 PSERS Retirement Contributions				1,196.29
Total Personnel Services – Employee Benefits				\$396,979.24
Total 2340 Staff Relations and Negotiations Services				\$396,979.24

General Fund (10)

	<u>Elementary</u>	<u>Secondary</u>	<u>Federal</u>	<u>Total</u>
2350 Legal and Accounting Services				
300 <u>Purchased Professional and Technical Services</u>				20,141.56
330 Other Professional Services				
Total Purchased Professional and Technical Services				\$20,141.56
Total 2350 Legal and Accounting Services				\$20,141.56

General Fund (10)		Elementary	Secondary	Federal	Total
2360 Office of the Superintendent / Executive Director Services					
100 Personnel Services – Salaries					184,532.05
100 Personnel Services – Salaries					
Total Personnel Services – Salaries					\$184,532.05
200 Personnel Services – Employee Benefits					24,418.57
210 Group Insurance – Contracted Provider					12,139.95
220 Social Security Contributions					56,315.87
230 PSERS Retirement Contributions					74.24
250 Unemployment Compensation					906.84
260 Workers' Compensation					
Total Personnel Services – Employee Benefits					\$93,855.47
300 Purchased Professional and Technical Services					115.00
324 Professional Educational Services – Employee Training and Development Services					4,965.66
390 Other Purchased Professional and Technical Services					
Total Purchased Professional and Technical Services					\$5,080.66
400 Purchased Property Services					18,109.11
440 Rentals					
Total Purchased Property Services					\$18,109.11
500 Other Purchased Services					8,162.21
549 Other Advertising/Public Relations					2,231.60
580 Travel					
Total Other Purchased Services					\$10,393.81
600 Supplies					4,419.10
610 General Supplies					
Total Supplies					\$4,419.10
800 Other Objects					2,750.00
810 Dues and Fees					
Total Other Objects					\$2,750.00
Total 2360 Office of the Superintendent / Executive Director Services					\$319,140.20

.EA : 116191503 Central Columbia SD

Printed 10/20/2017 2:13:11 PM

Page - 21 of 48

General Fund (10)				
2380 Office of the Principal Services	Elementary	Secondary	Federal	Total
100 Personnel Services – Salaries				
100 Personnel Services – Salaries	290,570.60	373,083.55		663,654.15
Total Personnel Services – Salaries	\$290,570.60	\$373,083.55		\$663,654.15
200 Personnel Services – Employee Benefits				
210 Group Insurance – Contracted Provider	53,457.92	51,783.41		105,241.33
220 Social Security Contributions	21,488.33	27,905.15		49,393.48
230 PSERS Retirement Contributions	87,252.74	112,019.82		199,272.56
250 Unemployment Compensation	218.21	248.51		466.72
260 Workers' Compensation	1,403.59	1,802.30		3,205.89
Total Personnel Services – Employee Benefits	\$163,820.79	\$193,759.19		\$357,579.98
500 Other Purchased Services				
580 Travel	2,736.86	1,421.53		4,158.39
599 Other Miscellaneous Purchased Services		2,636.09		2,636.09
Total Other Purchased Services	\$2,736.86	\$4,057.62		\$6,794.48
600 Supplies				
610 General Supplies	1,086.07	7,529.89		8,615.96
Total Supplies	\$1,086.07	\$7,529.89		\$8,615.96
800 Other Objects				
810 Dues and Fees	1,440.25	1,596.75		3,037.00
Total Other Objects	\$1,440.25	\$1,596.75		\$3,037.00
Total 2380 Office of the Principal Services	\$459,654.57	\$580,027.00		\$1,039,681.57

General Fund (10)

2390 Other Administration Services

Elementary

Secondary

Federal

Total

800 Other Objects

810 Dues and Fees

92,795.95

Total Other Objects

\$92,795.95

Total 2390 Other Administration Services

\$92,795.95

.EA : 116191503 Central Columbia SD

Printed 10/20/2017 2:13:11 PM

Page - 23 of 48

General Fund (10)				
2400 Support Services – Pupil Health	Elementary	Secondary	Federal	Total
100 Personnel Services – Salaries				
100 Personnel Services – Salaries				166,973.71
Total Personnel Services – Salaries				\$166,973.71
200 Personnel Services – Employee Benefits				
210 Group Insurance – Contracted Provider				38,461.71
220 Social Security Contributions				12,212.82
230 PSERS Retirement Contributions				50,112.26
250 Unemployment Compensation				123.25
260 Workers' Compensation				806.51
Total Personnel Services – Employee Benefits				\$101,716.55
300 Purchased Professional and Technical Services				
324 Professional Educational Services – Employee Training and Development Services				28.50
330 Other Professional Services				5,500.00
Total Purchased Professional and Technical Services				\$5,528.50
600 Supplies				
610 General Supplies				5,024.98
Total Supplies				\$5,024.98
800 Other Objects				
810 Dues and Fees				260.00
Total Other Objects				\$260.00
Total 2400 Support Services – Pupil Health				\$279,503.74

General Fund (10)

2420 Medical Services	<u>Elementary</u>	<u>Secondary</u>	<u>Federal</u>	<u>Total</u>
300 <u>Purchased Professional and Technical Services</u>				
330 Other Professional Services				5,500.00
Total Purchased Professional and Technical Services				\$5,500.00
Total 2420 Medical Services				\$5,500.00

General Fund (10)		Elementary	Secondary	Federal	Total
2440 Nursing Services					
100 Personnel Services – Salaries					166,973.71
100 Personnel Services – Salaries					
Total Personnel Services – Salaries					\$166,973.71
200 Personnel Services – Employee Benefits					
210 Group Insurance – Contracted Provider					38,461.71
220 Social Security Contributions					12,212.82
230 PSERS Retirement Contributions					50,112.26
250 Unemployment Compensation					123.25
260 Workers' Compensation					806.51
Total Personnel Services – Employee Benefits					\$101,716.55
300 Purchased Professional and Technical Services					
324 Professional Educational Services – Employee Training and Development Services					28.50
Total Purchased Professional and Technical Services					\$28.50
600 Supplies					
610 General Supplies					5,024.98
Total Supplies					\$5,024.98
800 Other Objects					
810 Dues and Fees					260.00
Total Other Objects					\$260.00
Total 2440 Nursing Services					\$274,003.74

General Fund (10)	Elementary	Secondary	Federal	Total
2500 Support Services – Business				
100 <u>Personnel Services – Salaries</u>				192,645.16
100 Personnel Services – Salaries				192,645.16
Total Personnel Services – Salaries				\$192,645.16
200 <u>Personnel Services – Employee Benefits</u>				39,732.98
210 Group Insurance – Contracted Provider				14,447.02
220 Social Security Contributions				57,851.34
230 PSERS Retirement Contributions				156.22
250 Unemployment Compensation				930.48
260 Workers' Compensation				
Total Personnel Services – Employee Benefits				\$113,118.04
300 <u>Purchased Professional and Technical Services</u>				524.05
324 Professional Educational Services – Employee Training and Development Services				395.00
340 Technical Services				
Total Purchased Professional and Technical Services				\$919.05
500 <u>Other Purchased Services</u>				17,700.81
530 Communications				3,267.69
580 Travel				
Total Other Purchased Services				\$20,968.50
600 <u>Supplies</u>				17,833.58
610 General Supplies				83,141.98
650 Supplies & Fees – Technology Related				
Total Supplies				\$100,975.56
800 <u>Other Objects</u>				1,043.65
810 Dues and Fees				
Total Other Objects				\$1,043.65
Total 2500 Support Services – Business				\$429,669.96

General Fund (10)	Elementary	Secondary	Federal	Total
2510 Fiscal Services				
100 <u>Personnel Services – Salaries</u>				
100 Personnel Services – Salaries				190,906.06
Total Personnel Services – Salaries				\$190,906.06
200 <u>Personnel Services – Employee Benefits</u>				
210 Group Insurance – Contracted Provider				39,732.98
220 Social Security Contributions				14,319.86
230 PSERS Retirement Contributions				57,329.09
250 Unemployment Compensation				156.22
260 Workers' Compensation				922.08
Total Personnel Services – Employee Benefits				\$112,460.23
300 <u>Purchased Professional and Technical Services</u>				
324 Professional Educational Services – Employee Training and Development Services				524.05
340 Technical Services				395.00
Total Purchased Professional and Technical Services				\$919.05
500 <u>Other Purchased Services</u>				
530 Communications				17,700.81
580 Travel				3,267.69
Total Other Purchased Services				\$20,968.50
600 <u>Supplies</u>				
610 General Supplies				10,965.78
650 Supplies & Fees – Technology Related				83,141.98
Total Supplies				\$94,107.76
800 <u>Other Objects</u>				
810 Dues and Fees				1,043.65
Total Other Objects				\$1,043.65
Total 2510 Fiscal Services				\$420,405.25

.EA : 116191503 Central Columbia SD

Printed 10/20/2017 2:13:11 PM

Page - 28 of 48

General Fund (10)	Elementary	Secondary	Federal	Total
2511 Supervision of Fiscal Services - Head of Component				
100 Personnel Services – Salaries				
100 Personnel Services – Salaries				95,819.00
Total Personnel Services – Salaries				\$95,819.00
200 Personnel Services – Employee Benefits				
210 Group Insurance – Contracted Provider				15,630.08
220 Social Security Contributions				7,132.03
230 PSERS Retirement Contributions				28,774.43
250 Unemployment Compensation				40.95
260 Workers' Compensation				462.80
Total Personnel Services – Employee Benefits				\$52,040.29
300 Purchased Professional and Technical Services				
324 Professional Educational Services – Employee Training and Development Services				449.05
340 Technical Services				395.00
Total Purchased Professional and Technical Services				\$844.05
500 Other Purchased Services				
530 Communications				17,700.81
580 Travel				3,267.69
Total Other Purchased Services				\$20,968.50
600 Supplies				
610 General Supplies				10,965.78
650 Supplies & Fees – Technology Related				83,141.98
Total Supplies				\$94,107.76
800 Other Objects				
810 Dues and Fees				1,043.65
Total Other Objects				\$1,043.65
Total 2511 Supervision of Fiscal Services - Head of Component				\$264,823.25

General Fund (10)

	<u>Elementary</u>	<u>Secondary</u>	<u>Federal</u>	<u>Total</u>
2513 Receiving and Disbursing Funds Services				
100 Personnel Services – Salaries				
100 Personnel Services – Salaries				26,699.26
Total Personnel Services – Salaries				\$26,699.26
200 Personnel Services – Employee Benefits				
210 Group Insurance – Contracted Provider				14,043.52
220 Social Security Contributions				1,972.02
230 PSERS Retirement Contributions				8,017.80
250 Unemployment Compensation				40.96
260 Workers' Compensation				128.93
Total Personnel Services – Employee Benefits				\$24,203.23
Total 2513 Receiving and Disbursing Funds Services				\$50,902.49

General Fund (10)

2514 Payroll Services

Elementary

Secondary

Federal

Total

100 Personnel Services – Salaries

100 Personnel Services – Salaries

38,935.87

Total Personnel Services – Salaries

\$38,935.87

200 Personnel Services – Employee Benefits

210 Group Insurance – Contracted Provider

3,788.66

220 Social Security Contributions

2,985.82

230 PSERS Retirement Contributions

11,692.47

250 Unemployment Compensation

20.47

260 Workers' Compensation

188.12

Total Personnel Services – Employee Benefits

\$18,675.54

Total 2514 Payroll Services

\$57,611.41

General Fund (10)				
2515 Financial Accounting Services	Elementary	Secondary	Federal	Total
100 Personnel Services – Salaries				29,451.93
100 Personnel Services – Salaries				
Total Personnel Services – Salaries				\$29,451.93
200 Personnel Services – Employee Benefits				
210 Group Insurance – Contracted Provider				6,270.72
220 Social Security Contributions				2,229.99
230 PSERS Retirement Contributions				8,844.39
250 Unemployment Compensation				53.84
260 Workers' Compensation				142.23
Total Personnel Services – Employee Benefits				\$17,541.17
300 Purchased Professional and Technical Services				
324 Professional Educational Services – Employee Training and Development Services				75.00
Total Purchased Professional and Technical Services				\$75.00
Total 2515 Financial Accounting Services				\$47,068.10

General Fund (10)				
2590 Other Support Services – Business	Elementary	Secondary	Federal	Total
100 Personnel Services – Salaries				
100 Personnel Services – Salaries				1,739.10
Total Personnel Services – Salaries				\$1,739.10
200 Personnel Services – Employee Benefits				
220 Social Security Contributions				127.16
230 PSERS Retirement Contributions				522.25
260 Workers' Compensation				8.40
Total Personnel Services – Employee Benefits				\$657.81
600 Supplies				
610 General Supplies				6,867.80
Total Supplies				\$6,867.80
Total 2590 Other Support Services – Business				\$9,264.71

.EA : 116191503 Central Columbia SD

Printed 10/20/2017 2:13:11 PM

Page - 33 of 48

General Fund (10)				
2600 Operation and Maintenance of Plant Services	Elementary	Secondary	Federal	Total
100 Personnel Services – Salaries				
100 Personnel Services – Salaries				609,100.38
Total Personnel Services – Salaries				\$609,100.38
200 Personnel Services – Employee Benefits				
210 Group Insurance – Contracted Provider				185,278.55
220 Social Security Contributions				44,846.42
230 PSERS Retirement Contributions				179,449.23
250 Unemployment Compensation				871.83
260 Workers' Compensation				2,942.45
Total Personnel Services – Employee Benefits				\$413,388.48
300 Purchased Professional and Technical Services				
324 Professional Educational Services – Employee Training and Development Services				589.05
Total Purchased Professional and Technical Services				\$589.05
400 Purchased Property Services				
410 Cleaning Services				39,598.47
420 Utility Services				446,474.37
430 Repairs and Maintenance Services				209,336.03
440 Rentals				734.00
460 Extermination Services				4,124.00
Total Purchased Property Services				\$700,266.87
500 Other Purchased Services				
523 General Property and Liability Insurance				96,812.00
530 Communications				2,314.46
580 Travel				277.02
Total Other Purchased Services				\$99,403.48
600 Supplies				
610 General Supplies	87,986.52	87,986.51		175,973.03
620 Energy				80,241.78
Total Supplies	\$87,986.52	\$87,986.51		\$256,214.81
700 Property				
752 Capital Equipment – Original and Additional				6,390.00
Total Property				\$6,390.00
800 Other Objects				
810 Dues and Fees				1,002.92
Total Other Objects				\$1,002.92
Total 2600 Operation and Maintenance of Plant Services	\$87,986.52	\$87,986.51		\$2,086,355.99

General Fund (10)				
2610 Supervision of Operation and Maintenance of Plant Services	Elementary	Secondary	Federal	Total
100 Personnel Services – Salaries				63,672.44
100 Personnel Services – Salaries				63,672.44
Total Personnel Services – Salaries				\$63,672.44
200 Personnel Services – Employee Benefits				15,375.53
210 Group Insurance – Contracted Provider				4,676.33
220 Social Security Contributions				19,120.92
230 PSERS Retirement Contributions				39.33
250 Unemployment Compensation				307.58
260 Workers' Compensation				
Total Personnel Services – Employee Benefits				\$39,519.69
300 Purchased Professional and Technical Services				534.05
324 Professional Educational Services – Employee Training and Development Services				534.05
Total Purchased Professional and Technical Services				\$534.05
500 Other Purchased Services				277.02
580 Travel				277.02
Total Other Purchased Services				\$277.02
600 Supplies				4,091.50
610 General Supplies	2,045.75	2,045.75		4,091.50
Total Supplies	\$2,045.75	\$2,045.75		\$4,091.50
800 Other Objects				366.92
810 Dues and Fees				366.92
Total Other Objects				\$366.92
Total 2610 Supervision of Operation and Maintenance of Plant Services	\$2,045.75	\$2,045.75		\$108,461.62

_EA : 116191503 Central Columbia SD

Printed 10/20/2017 2:13:11 PM

Page - 35 of 48

General Fund (10)				
2611 Supervision of Operation and Maintenance of Plant Services – Head of Component	Elementary	Secondary	Federal	Total
100 Personnel Services – Salaries				
100 Personnel Services – Salaries				63,672.44
Total Personnel Services – Salaries				\$63,672.44
200 Personnel Services – Employee Benefits				
210 Group Insurance – Contracted Provider				15,375.53
220 Social Security Contributions				4,676.33
230 PSERS Retirement Contributions				19,120.92
250 Unemployment Compensation				39.33
260 Workers' Compensation				307.58
Total Personnel Services – Employee Benefits				\$39,519.69
300 Purchased Professional and Technical Services				
324 Professional Educational Services – Employee Training and Development Services				534.05
Total Purchased Professional and Technical Services				\$534.05
500 Other Purchased Services				
580 Travel				277.02
Total Other Purchased Services				\$277.02
600 Supplies				
610 General Supplies	2,045.75	2,045.75		4,091.50
Total Supplies	\$2,045.75	\$2,045.75		\$4,091.50
800 Other Objects				
810 Dues and Fees				366.92
Total Other Objects				\$366.92
Total 2611 Supervision of Operation and Maintenance of Plant Services – Head of Component	\$2,045.75	\$2,045.75		\$108,461.62

LEA : 116191503 Central Columbia SD

Printed 10/20/2017 2:13:11 PM

Page - 36 of 48

General Fund (10)				
2620 Operation of Buildings Services	Elementary	Secondary	Federal	Total
100 Personnel Services – Salaries				
100 Personnel Services – Salaries				545,427.94
Total Personnel Services – Salaries				\$545,427.94
200 Personnel Services – Employee Benefits				
210 Group Insurance – Contracted Provider				169,903.02
220 Social Security Contributions				40,170.09
230 PSERS Retirement Contributions				160,328.31
250 Unemployment Compensation				832.50
260 Workers' Compensation				2,634.87
Total Personnel Services – Employee Benefits				\$373,868.79
300 Purchased Professional and Technical Services				
324 Professional Educational Services – Employee Training and Development Services				55.00
Total Purchased Professional and Technical Services				\$55.00
400 Purchased Property Services				
410 Cleaning Services				39,598.47
420 Utility Services				446,474.37
430 Repairs and Maintenance Services				28,017.93
440 Rentals				734.00
460 Extermination Services				4,124.00
Total Purchased Property Services				\$518,948.77
500 Other Purchased Services				
523 General Property and Liability Insurance				96,812.00
530 Communications				2,314.46
Total Other Purchased Services				\$99,126.46
600 Supplies				
610 General Supplies	38,222.72	38,222.72		76,445.44
620 Energy				80,241.78
Total Supplies	\$38,222.72	\$38,222.72		\$156,687.22
700 Property				
752 Capital Equipment – Original and Additional				6,390.00
Total Property				\$6,390.00
800 Other Objects				
810 Dues and Fees				636.00
Total Other Objects				\$636.00
Total 2620 Operation of Buildings Services	\$38,222.72	\$38,222.72		\$1,701,140.18

EA : 116191503 Central Columbia SD

Printed 10/20/2017 2:13:11 PM

General Fund (10)	Elementary	Secondary	Federal	Total
2630 Care and Upkeep of Grounds Services				
600 <u>Supplies</u>				
610 General Supplies	44,122.68	44,122.68		88,245.36
Total Supplies	\$44,122.68	\$44,122.68		\$88,245.36
Total 2630 Care and Upkeep of Grounds Services	\$44,122.68	\$44,122.68		\$88,245.36

EA : 116191503 Central Columbia SD

Printed 10/20/2017 2:13:11 PM

General Fund (10)

	<u>Elementary</u>	<u>Secondary</u>	<u>Federal</u>	<u>Total</u>
2640 Care and Upkeep of Equipment Services				
400 <u>Purchased Property Services</u>				138,962.40
430 Repairs and Maintenance Services				
Total Purchased Property Services				\$138,962.40
Total 2640 Care and Upkeep of Equipment Services				\$138,962.40

General Fund (10)	<u>Elementary</u>	<u>Secondary</u>	<u>Federal</u>	<u>Total</u>
2650 Vehicle Operation and Maintenance Services (Other Than Student Transportation Vehicles)				
400 <u>Purchased Property Services</u>				310.03
430 Repairs and Maintenance Services				
Total Purchased Property Services				\$310.03
600 <u>Supplies</u>				213.32
610 General Supplies	106.66	106.66		
Total Supplies	\$106.66	\$106.66		\$213.32
Total 2650 Vehicle Operation and Maintenance Services (Other Than Student Transportation Vehicles)	\$106.66	\$106.66		\$523.35

General Fund (10)	<u>Elementary</u>	<u>Secondary</u>	<u>Federal</u>	<u>Total</u>
2690 Other Operation and Maintenance of Plant Services				
400 <u>Purchased Property Services</u>				
430 Repairs and Maintenance Services				42,045.67
Total Purchased Property Services				\$42,045.67
600 <u>Supplies</u>				
610 General Supplies	3,488.71	3,488.70		6,977.41
Total Supplies	\$3,488.71	\$3,488.70		\$6,977.41
Total 2690 Other Operation and Maintenance of Plant Services	\$3,488.71	\$3,488.70		\$49,023.08

General Fund (10)				
2700 Student Transportation Services	Elementary	Secondary	Federal	Total
100 Personnel Services – Salaries				34,390.77
100 Personnel Services – Salaries				
Total Personnel Services – Salaries				\$34,390.77
200 Personnel Services – Employee Benefits				7,088.47
210 Group Insurance – Contracted Provider				2,427.32
220 Social Security Contributions				10,312.25
230 PSERS Retirement Contributions				78.09
250 Unemployment Compensation				166.01
260 Workers' Compensation				
Total Personnel Services – Employee Benefits				\$20,072.14
400 Purchased Property Services				1,189.00
430 Repairs and Maintenance Services				
Total Purchased Property Services				\$1,189.00
500 Other Purchased Services				1,200,204.35
513 Contracted Carriers				23,732.48
516 Student Transportation Services From the IU				
Total Other Purchased Services				\$1,223,936.83
600 Supplies				353.72
610 General Supplies				
Total Supplies				\$353.72
800 Other Objects				10.00
810 Dues and Fees				
Total Other Objects				\$10.00
Total 2700 Student Transportation Services				\$1,279,952.46

General Fund (10)	<u>Elementary</u>	<u>Secondary</u>	<u>Federal</u>	<u>Total</u>
2710 Supervision of Student Transportation Services				
100 Personnel Services – Salaries				
100 Personnel Services – Salaries				22,600.31
Total Personnel Services – Salaries				\$22,600.31
200 Personnel Services – Employee Benefits				
210 Group Insurance – Contracted Provider				7,088.47
220 Social Security Contributions				1,675.66
230 PSERS Retirement Contributions				6,786.94
250 Unemployment Compensation				40.91
260 Workers' Compensation				109.09
Total Personnel Services – Employee Benefits				\$15,701.07
400 Purchased Property Services				
430 Repairs and Maintenance Services				1,189.00
Total Purchased Property Services				\$1,189.00
600 Supplies				
610 General Supplies				353.72
Total Supplies				\$353.72
800 Other Objects				
810 Dues and Fees				10.00
Total Other Objects				\$10.00
Total 2710 Supervision of Student Transportation Services				\$39,854.10

General Fund (10)				
2719 Supervision of Student Transportation Services -- All Other Supervision				
	<u>Elementary</u>	<u>Secondary</u>	<u>Federal</u>	<u>Total</u>
100 Personnel Services -- Salaries				
100 Personnel Services -- Salaries				22,600.31
Total Personnel Services -- Salaries				\$22,600.31
200 Personnel Services -- Employee Benefits				
210 Group Insurance -- Contracted Provider				7,088.47
220 Social Security Contributions				1,675.66
230 PSERS Retirement Contributions				6,786.94
250 Unemployment Compensation				40.91
260 Workers' Compensation				109.09
Total Personnel Services -- Employee Benefits				\$15,701.07
400 Purchased Property Services				
430 Repairs and Maintenance Services				1,189.00
Total Purchased Property Services				\$1,189.00
600 Supplies				
610 General Supplies				353.72
Total Supplies				\$353.72
800 Other Objects				
810 Dues and Fees				10.00
Total Other Objects				\$10.00
Total 2719 Supervision of Student Transportation Services -- All Other Supervision				\$39,854.10

General Fund (10)

	<u>Elementary</u>	<u>Secondary</u>	<u>Federal</u>	<u>Total</u>
2720 Vehicle Operation Services				
500 Other Purchased Services				
513 Contracted Carriers				1,051,920.74
516 Student Transportation Services From the IU				23,732.48
Total Other Purchased Services				\$1,075,653.22
Total 2720 Vehicle Operation Services				\$1,075,653.22

LEA : 116191503 Central Columbia SD

Printed 10/20/2017 2:13:11 PM

Page - 45 of 48

General Fund (10)

	<u>Elementary</u>	<u>Secondary</u>	<u>Federal</u>	<u>Total</u>
2750 Nonpublic Transportation				
100 <u>Personnel Services – Salaries</u>				
100 Personnel Services – Salaries				11,790.46
Total Personnel Services – Salaries				\$11,790.46
200 <u>Personnel Services – Employee Benefits</u>				
220 Social Security Contributions				751.66
230 PSERS Retirement Contributions				3,525.31
250 Unemployment Compensation				37.18
260 Workers' Compensation				56.92
Total Personnel Services – Employee Benefits				\$4,371.07
500 <u>Other Purchased Services</u>				
513 Contracted Carriers				148,283.61
Total Other Purchased Services				\$148,283.61
Total 2750 Nonpublic Transportation				\$164,445.14

General Fund (10)

	<u>Elementary</u>	<u>Secondary</u>	<u>Federal</u>	<u>Total</u>
2800 Support Services – Central				
100 Personnel Services – Salaries				
100 Personnel Services – Salaries				6,780.00
Total Personnel Services – Salaries				\$6,780.00
200 Personnel Services – Employee Benefits				
220 Social Security Contributions				518.70
230 PSERS Retirement Contributions				315.32
250 Unemployment Compensation				18.12
260 Workers' Compensation				32.76
Total Personnel Services – Employee Benefits				\$884.90
Total 2800 Support Services – Central				\$7,664.90

General Fund (10)

	<u>Elementary</u>	<u>Secondary</u>	<u>Federal</u>	<u>Total</u>
2830 Staff Services				
100 Personnel Services – Salaries				
100 Personnel Services – Salaries				6,780.00
Total Personnel Services – Salaries				\$6,780.00
200 Personnel Services – Employee Benefits				
220 Social Security Contributions				518.70
230 PSERS Retirement Contributions				315.32
250 Unemployment Compensation				18.12
260 Workers' Compensation				32.76
Total Personnel Services – Employee Benefits				\$884.90
Total 2830 Staff Services				\$7,664.90

General Fund (10)				
	<u>Elementary</u>	<u>Secondary</u>	<u>Federal</u>	<u>Total</u>
2839 Other Staff Services				
100 Personnel Services – Salaries				
100 Personnel Services – Salaries				6,780.00
Total Personnel Services – Salaries				\$6,780.00
200 Personnel Services – Employee Benefits				
220 Social Security Contributions				518.70
230 PSERS Retirement Contributions				315.32
250 Unemployment Compensation				18.12
260 Workers' Compensation				32.76
Total Personnel Services – Employee Benefits				\$884.90
Total 2839 Other Staff Services				\$7,664.90

.EA : 116191503 Central Columbia SD

Printed 10/20/2017 2:13:14 PM

Page - 1 of 4

General Fund (10)		Total
3000 Operation of Non-Instructional Services		
100 Personnel Services – Salaries		
100 Personnel Services – Salaries		276,656.79
Total Personnel Services – Salaries		\$276,656.79
200 Personnel Services – Employee Benefits		
220 Social Security Contributions		21,117.73
230 PSERS Retirement Contributions		55,564.72
250 Unemployment Compensation		499.29
260 Workers' Compensation		1,336.26
Total Personnel Services – Employee Benefits		\$78,518.00
300 Purchased Professional and Technical Services		
330 Other Professional Services		40,579.00
Total Purchased Professional and Technical Services		\$40,579.00
400 Purchased Property Services		
430 Repairs and Maintenance Services		7,214.80
Total Purchased Property Services		\$7,214.80
500 Other Purchased Services		
510 Student Transportation Services		58,800.61
520 Insurance – General		11,774.00
580 Travel		8,223.32
599 Other Miscellaneous Purchased Services		46,961.25
Total Other Purchased Services		\$125,759.18
600 Supplies		
610 General Supplies		105,643.22
Total Supplies		\$105,643.22
700 Property		
752 Capital Equipment – Original and Additional		5,374.67
762 Capitalized Equipment - Replacement		9,238.21
Total Property		\$14,612.88
800 Other Objects		
810 Dues and Fees		20,701.00
Total Other Objects		\$20,701.00
Total 3000 Operation of Non-Instructional Services		\$669,684.87

General Fund (10)	<u>Elementary</u>	<u>Secondary</u>	<u>Federal</u>	<u>Total</u>
3200 Student Activities				
100 <u>Personnel Services – Salaries</u>				
100 Personnel Services – Salaries				275,615.75
Total Personnel Services – Salaries				\$275,615.75
200 <u>Personnel Services – Employee Benefits</u>				
220 Social Security Contributions				21,038.16
230 PSERS Retirement Contributions				55,327.19
250 Unemployment Compensation				498.24
260 Workers' Compensation				1,331.25
Total Personnel Services – Employee Benefits				\$78,194.84
300 <u>Purchased Professional and Technical Services</u>				
330 Other Professional Services				40,579.00
Total Purchased Professional and Technical Services				\$40,579.00
400 <u>Purchased Property Services</u>				
430 Repairs and Maintenance Services				7,214.80
Total Purchased Property Services				\$7,214.80
500 <u>Other Purchased Services</u>				
510 Student Transportation Services				58,800.61
520 Insurance – General				11,774.00
580 Travel				8,223.32
599 Other Miscellaneous Purchased Services				46,961.25
Total Other Purchased Services				\$125,759.18
600 <u>Supplies</u>				
610 General Supplies				105,643.22
Total Supplies				\$105,643.22
700 <u>Property</u>				
752 Capital Equipment – Original and Additional				5,374.67
762 Capitalized Equipment - Replacement				9,238.21
Total Property				\$14,612.88
800 <u>Other Objects</u>				
810 Dues and Fees				20,701.00
Total Other Objects				\$20,701.00
Total 3200 Student Activities				\$668,320.67

General Fund (10)

	<u>Elementary</u>	<u>Secondary</u>	<u>Federal</u>	<u>Total</u>
3300 Community Services				
100 Personnel Services – Salaries				
100 Personnel Services – Salaries				174.00
Total Personnel Services – Salaries				\$174.00
200 Personnel Services – Employee Benefits				
220 Social Security Contributions				13.33
250 Unemployment Compensation				0.72
260 Workers' Compensation				0.85
Total Personnel Services – Employee Benefits				\$14.90
Total 3300 Community Services				\$188.90

General Fund (10)

	<u>Elementary</u>	<u>Secondary</u>	<u>Federal</u>	<u>Total</u>
3400 Scholarships and Awards				
100 <u>Personnel Services – Salaries</u>				
100 Personnel Services – Salaries				867.04
Total Personnel Services – Salaries				\$867.04
200 <u>Personnel Services – Employee Benefits</u>				
220 Social Security Contributions				66.24
230 PSERS Retirement Contributions				237.53
250 Unemployment Compensation				0.33
260 Workers' Compensation				4.16
Total Personnel Services – Employee Benefits				\$308.26
Total 3400 Scholarships and Awards				\$1,175.30

General Fund (10)		
5000 Other Expenditures and Financing Uses		Total
800 Other Objects		
830 Interest		1,178,729.36
Total Other Objects		\$1,178,729.36
900 Other Uses of Funds		
910 Redemption of Principal		11,104,729.78
920 Authority Obligations		68,502.82
932 Capital Reserve Fund Transfers Applicable To Fund 32		950,000.00
990 Miscellaneous Other Uses of Funds		92,453.75
Total Other Uses of Funds		\$12,215,686.35
Total 5000 Other Expenditures and Financing Uses		\$13,394,415.71

.EA : 116191503 Central Columbia SD

Printed 10/20/2017 2:13:15 PM

Page - 2 of 7

General Fund (10)

	<u>Elementary</u>	<u>Secondary</u>	<u>Federal</u>	<u>Total</u>
5100 Debt Service / Other Expenditures and Financing Uses				
800 Other Objects				
830 Interest				1,178,729.36
Total Other Objects				\$1,178,729.36
900 Other Uses of Funds				
910 Redemption of Principal				11,104,729.78
920 Authority Obligations				68,502.82
990 Miscellaneous Other Uses of Funds				92,453.75
Total Other Uses of Funds				\$11,265,686.35
Total 5100 Debt Service / Other Expenditures and Financing Uses				\$12,444,415.71

General Fund (10)	<u>Elementary</u>	<u>Secondary</u>	<u>Federal</u>	<u>Total</u>
5110 Debt Service				
800 <u>Other Objects</u>				1,178,729.36
830 Interest				
Total Other Objects				\$1,178,729.36
900 <u>Other Uses of Funds</u>				1,295,000.00
910 Redemption of Principal				68,502.82
920 Authority Obligations				
Total Other Uses of Funds				\$1,363,502.82
Total 5110 Debt Service				\$2,542,232.18

General Fund (10)

	<u>Elementary</u>	<u>Secondary</u>	<u>Federal</u>	<u>Total</u>
5120 Debt Service – Refunded Bonds				
900 <u>Other Uses of Funds</u>				9,809,729.78
910 Redemption of Principal				9,809,729.78
Total Other Uses of Funds				\$9,809,729.78
Total 5120 Debt Service – Refunded Bonds				\$9,809,729.78

General Fund (10)

	<u>Elementary</u>	<u>Secondary</u>	<u>Federal</u>	<u>Total</u>
5150 Bond Discounts				
900 Other Uses of Funds				92,453.75
990 Miscellaneous Other Uses of Funds				92,453.75
Total Other Uses of Funds				\$92,453.75
Total 5150 Bond Discounts				\$92,453.75

General Fund (10)

	<u>Elementary</u>	<u>Secondary</u>	<u>Federal</u>	<u>Total</u>
5200 Interfund Transfers – Out				
900 <u>Other Uses of Funds</u>				
932 Capital Reserve Fund Transfers Applicable To Fund 32				950,000.00
Total Other Uses of Funds				\$950,000.00
Total 5200 Interfund Transfers – Out				\$950,000.00

EA : 116191503 Central Columbia SD

Printed 10/20/2017 2:13:15 PM

General Fund (10)

	<u>Elementary</u>	<u>Secondary</u>	<u>Federal</u>	<u>Total</u>
5230 Capital Projects Fund Transfers				
900 <u>Other Uses of Funds</u>				
932 Capital Reserve Fund Transfers Applicable To Fund 32				950,000.00
Total Other Uses of Funds				\$950,000.00
Total 5230 Capital Projects Fund Transfers				\$950,000.00

Capital Reserve Fund - § 1431 (32)

2000 Support Services

600 Supplies

610 General Supplies

Total

90,570.28

Total Supplies

\$90,570.28

700 Property

752 Capital Equipment – Original and Additional

762 Capitalized Equipment - Replacement

768 Capitalized Technology Software - Replacement

194,310.60

338,078.89

37,430.00

Total Property

\$569,819.49

Total 2000 Support Services

\$660,389.77

Capital Reserve Fund - § 1431 (32)

	<u>Elementary</u>	<u>Secondary</u>	<u>Federal</u>	<u>Total</u>
2200 Support Services – Instructional Staff				
600 Supplies				
610 General Supplies	8,872.00	8,872.00		17,744.00
Total Supplies	\$8,872.00	\$8,872.00		\$17,744.00
700 Property				
762 Capitalized Equipment - Replacement	18,960.00	18,960.00		37,920.00
768 Capitalized Technology Software - Replacement	18,715.00	18,715.00		37,430.00
Total Property	\$37,675.00	\$37,675.00		\$75,350.00
Total 2200 Support Services – Instructional Staff	\$46,547.00	\$46,547.00		\$93,094.00

LEA : 116191503 Central Columbia SD

Printed 10/20/2017 2:13:13 PM

Page - 3 of 5

Capital Reserve Fund - \$ 1431 (32)

2220 Technology Support Services

	<u>Elementary</u>	<u>Secondary</u>	<u>Federal</u>	<u>Total</u>
600 Supplies				
610 General Supplies	8,872.00	8,872.00		17,744.00
Total Supplies	\$8,872.00	\$8,872.00		\$17,744.00
700 Property				
762 Capitalized Equipment - Replacement	18,960.00	18,960.00		37,920.00
768 Capitalized Technology Software - Replacement	18,715.00	18,715.00		37,430.00
Total Property	\$37,675.00	\$37,675.00		\$75,350.00
Total 2220 Technology Support Services	\$46,547.00	\$46,547.00		\$93,094.00

Capital Reserve Fund - § 1431 (32)

	<u>Elementary</u>	<u>Secondary</u>	<u>Federal</u>	<u>Total</u>
2600 Operation and Maintenance of Plant Services				
600 Supplies				
610 General Supplies	36,413.14	36,413.14		72,826.28
Total Supplies	\$36,413.14	\$36,413.14		\$72,826.28
700 Property				
752 Capital Equipment – Original and Additional				194,310.60
762 Capitalized Equipment - Replacement				300,158.89
Total Property				\$494,469.49
Total 2600 Operation and Maintenance of Plant Services	\$36,413.14	\$36,413.14		\$567,295.77

_EA : 116191503 Central Columbia SD

Printed 10/20/2017 2:13:13 PM

Page - 5 of 5

Capital Reserve Fund - \$ 1431 (32)

	<u>Elementary</u>	<u>Secondary</u>	<u>Federal</u>	<u>Total</u>
2620 Operation of Buildings Services				
600 Supplies				
610 General Supplies	36,413.14	36,413.14		72,826.28
Total Supplies	\$36,413.14	\$36,413.14		\$72,826.28
700 Property				
752 Capital Equipment – Original and Additional				194,310.60
762 Capitalized Equipment - Replacement				300,158.89
Total Property				\$494,469.49
Total 2620 Operation of Buildings Services	\$36,413.14	\$36,413.14		\$567,295.77

LEA : 116191503 Central Columbia SD

Printed 10/20/2017 2:13:18 PM

Page - 1 of 2

	<u>General Fund(10)</u>	<u>Public Purpose Trust(27)</u>	<u>Other Compt Approved (28)</u>	<u>Athletic / Activity(29)</u>	<u>Capital Reserve (690. 1850)(31)</u>
1000 Instruction					
1100 Regular Programs - Elementary / Secondary	10,431,493.18				
1200 Special Programs - Elementary / Secondary	2,878,793.16				
1300 Vocational Education	2,145,038.25				
1400 Other Instructional Programs - Elementary / Secondary	195,639.90				
1500 Nonpublic School Programs	10,130.00				
Total Instruction	\$15,661,094.49				
2000 Support Services					
2100 Support Services - Students	1,089,547.00				
2200 Support Services - Instructional Staff	1,766,441.65				
2300 Support Services - Administration	2,269,612.66				
2400 Support Services - Pupil Health	279,503.74				
2500 Support Services - Business	429,669.96				
2600 Operation and Maintenance of Plant Services	2,086,355.99				
2700 Student Transportation Services	1,279,952.46				
2800 Support Services - Central	7,664.90				
Total Support Services	\$9,208,748.36				
3000 Operation of Non-Instructional Services					
3200 Student Activities	668,320.67				
3300 Community Services	188.90				
3400 Scholarships and Awards	1,175.30				
Total Operation of Non-Instructional Services	\$669,684.87				
5000 Other Expenditures and Financing Uses					
5100 Debt Service / Other Expenditures and Financing Uses	12,444,415.71				
5200 Interfund Transfers - Out	950,000.00				
Total Other Expenditures and Financing Uses	\$13,394,415.71				
TOTAL ACTUAL EXPENDITURES & OTHER FINANCING USES	\$38,933,943.43				

_EA : 116191503 Central Columbia SD

Printed 10/20/2017 2:13:18 PM

Page - 2 of 2

	<u>Capital Reserve (1431)(32)</u>	<u>Other Capital Projects Fund(39)</u>	<u>Debt Service(40)</u>	<u>Permanent(90)</u>	<u>Total</u>
1000 Instruction					
1100 Regular Programs - Elementary / Secondary					10,431,493.18
1200 Special Programs - Elementary / Secondary					2,878,793.16
1300 Vocational Education					2,145,038.25
1400 Other Instructional Programs - Elementary / Secondary					195,639.90
1500 Nonpublic School Programs					10,130.00
Total Instruction					\$15,661,094.49
2000 Support Services					
2100 Support Services - Students					1,089,547.00
2200 Support Services - Instructional Staff	93,094.00				1,859,535.65
2300 Support Services - Administration					2,269,612.66
2400 Support Services - Pupil Health					279,503.74
2500 Support Services - Business					429,669.96
2600 Operation and Maintenance of Plant Services	567,295.77				2,653,651.76
2700 Student Transportation Services					1,279,952.46
2800 Support Services - Central					7,664.90
Total Support Services	\$660,389.77				\$9,869,138.13
3000 Operation of Non-Instructional Services					
3200 Student Activities					668,320.67
3300 Community Services					188.90
3400 Scholarships and Awards					1,175.30
Total Operation of Non-Instructional Services					\$669,684.87
5000 Other Expenditures and Financing Uses					
5100 Debt Service / Other Expenditures and Financing Uses					12,444,415.71
5200 Interfund Transfers - Out					950,000.00
Total Other Expenditures and Financing Uses					\$13,394,415.71
TOTAL ACTUAL EXPENDITURES & OTHER FINANCING USES	\$660,389.77				\$39,594,333.20

PSERS Salary Data (Salary Data should relate to the General Fund only)

Amount Description	Amount
Total Salary Base for salaries subject to PSERS withholding	11,505,228.23
Total Federally Funded salaries subject to PSERS withholding	540,520.03

Title I Expenditure Data

Amount Description	Amount
Expenditures Funded with Current Title I Funds	10,130.00
Expenditures Funded with Carry over Title I Funds	
Total Title I Expenditure Data	\$10,130.00

Title I ARRA Amount

Amount Description	Amount
Portion of Total Title I Expenditures funded with ARRA Title I	

Benefits for Staff Relative to Collective Bargaining Agreements

	OBJECT	COVERED	NOT COVERED	TOTAL
10 General Fund	No Self Insurance data to report			
	211 Medical Insurance	2,117,991.35	529,497.83	2,647,489.18
	212 Dental Insurance	109,532.39	27,383.09	136,915.48
	215 Eye Care Insurance	13,912.16	3,478.33	17,390.49
	216 Prescription Insurance			
	271 Self-Insurance Medical Benefits			
	272 Self-Insurance Dental Benefits			
	275 Self-Insurance Eye Care Benefits			
	276 Self-Insurance Prescription Benefits			
	FUND TOTAL		\$2,241,435.90	\$560,359.25
50 Enterprise Fund	No Self Insurance data to report			
	211 Medical Insurance	11,509.17	46,036.66	57,545.83
	212 Dental Insurance	754.07	3,016.27	3,770.34
	215 Eye Care Insurance	95.29	381.15	476.44
	216 Prescription Insurance			
	271 Self-Insurance Medical Benefits			
	272 Self-Insurance Dental Benefits			
	275 Self-Insurance Eye Care Benefits			
	276 Self-Insurance Prescription Benefits			
	FUND TOTAL		\$12,358.53	\$49,434.08
60 Internal Service Fund	No Self Insurance data to report			
	211 Medical Insurance			
	212 Dental Insurance			
	215 Eye Care Insurance			
	216 Prescription Insurance			
	271 Self-Insurance Medical Benefits			
	272 Self-Insurance Dental Benefits			
	275 Self-Insurance Eye Care Benefits			
	276 Self-Insurance Prescription Benefits			
	FUND TOTAL			
Total of All Funds		\$2,253,794.43	\$609,793.33	\$2,863,587.76

LEA : 116191503 Central Columbia SD

Printed 10/20/2017 2:13:27 PM

Page - 1 of 1

Function	Special Education (Prior Year)	Nonspecial Education (Prior Year)	Total (Prior Year)	Special Education (Current Year)	Nonspecial Education (Current Year)	Total (Current Year)
2120 Guidance Services	128,178.37	512,713.49	640,891.86	139,161.32	556,645.28	695,806.60
2140 Psychological Services	97,891.20	24,472.80	122,364.00	103,174.25	25,793.56	128,967.81
2150 Speech Pathology and Audiology Services	225,576.09		225,576.09	190,011.09		190,011.09
2160 Social Work Services	13,143.90	63,887.03	77,030.93	14,952.30	59,809.20	74,761.50
2260 Instruction and Curriculum Development Services	66,640.48	338,075.72	404,716.20	145,209.57	269,674.89	414,884.46
2350 Legal and Accounting Services	2,577.72	5,662.08	8,239.80	5,035.39	15,106.17	20,141.56
2420 Medical Services	1,500.00	6,000.00	7,500.00	1,100.00	4,400.00	5,500.00
2440 Nursing Services	51,902.43	207,609.71	259,512.14	54,800.75	219,202.99	274,003.74
2700 Student Transportation Services	252,126.86	1,008,507.43	1,260,634.29	255,990.50	1,023,961.96	1,279,952.46
Total	\$839,537.05	\$2,166,928.26	\$3,006,465.31	\$909,435.17	\$2,174,594.05	\$3,084,029.22

.EA : 116191503 Central Columbia SD

Printed 10/20/2017 2:13:28 PM

Page - 1 of 3

(PRINCIPAL AMOUNTS ONLY)

GOVERNMENTAL FUNDS/ ACTIVITIES

	Short-Term Borrowing	General Obligation Bonds/Notes	Authority Building Obligations	Other Long-Term Debt	Other Post- Employment Benefits (OPEB)	Compensated Absences	Net Pension Liability	Total
1. Debt at Beginning of Fiscal Year		43,525,000.00	390,735.00		364,184.00	2,107,074.14	38,767,000.00	85,153,993.14
2. Additional Debt Incurred During Year		9,995,000.00			101,921.00		5,884,000.00	15,980,921.00
3. Retirements and Repayments		10,295,000.00	60,776.00			252,474.76		10,608,250.76
4. Debt at End of Fiscal Year		43,225,000.00	329,959.00		466,105.00	1,854,599.38	44,651,000.00	90,526,663.38
5. Accreted Interest at End Of Fiscal Year								
6. Total Debt and Accreted Interest		43,225,000.00	329,959.00		466,105.00	1,854,599.38	44,651,000.00	90,526,663.38
7. Current Portion P&I - Due within 1 year		2,610,429.00	66,307.06					2,676,736.06
8. Interest Paid during current fiscal year		1,178,730.28	7,071.98					1,185,802.26

(PRINCIPAL AMOUNTS ONLY)

PROPRIETARY FUNDS

1. Debt at Beginning of Fiscal Year
2. Additional Debt Incurred During Year
3. Retirements and Repayments
4. Debt at End of Fiscal Year
5. Accreted Interest at End Of Fiscal Year
6. Total Debt and Accreted Interest
7. Current Portion P&I - Due within 1 year
8. Interest Paid during current fiscal year

Total Principal and Interest Payments Made by Your School - All Funds

Function	Fund		Principal (910)	Principal (920)	Interest (830)	Total (Principal +Interest)	Misc Other Uses (990)
5110	10	General Fund	1,295,000.00	68,502.82	1,178,729.36	2,542,232.18	
5110	20	Special Revenue Funds					
5110	30	Capital Projects Funds					
5110	40	Debt Service Fund					
5110	90	Permanent Fund					
5120	10	General Fund	9,809,729.78			9,809,729.78	
5120	20	Special Revenue Funds					
5120	30	Capital Projects Funds					
5120	40	Debt Service Fund					
Total Debt Payments - Governmental Funds			\$11,104,729.78	\$68,502.82	\$1,178,729.36	\$12,351,961.96	

Function	Fund		Principal (910)	Principal (920)	Interest (830)	Total (Principal +Interest)
5110	50	Enterprise Fund				
5110	60	Internal Service Fund				
5120	50	Enterprise Fund				
5120	60	Internal Service Fund				
Total Debt Payments - Proprietary Funds						

.EA : 116191503 Central Columbia SD

Printed 10/20/2017 2:13:28 PM

Page - 3 of 3

Debt Details**Governmental Funds/ Activities**

Debt Category	Debt Issue Date (MM/YYYY)	Debt at Beginning of Fiscal Year	Principal Amounts Only		Debt at End of Fiscal Year	Current Portion Due Within One Year (Principal and Interest)	Interest Paid During Fiscal Year
			Additions	Reductions / Repayments			
General Obligation Bonds/Notes – CIB	10/2016		9,995,000.00		9,995,000.00	263,443.00	144,318.00
General Obligation Bonds/Notes – CIB	12/2014	9,990,000.00		5,000.00	9,985,000.00	346,201.00	341,288.75
General Obligation Bonds/Notes – CIB	03/2014	9,960,000.00		5,000.00	9,955,000.00	385,709.00	380,783.76
General Obligation Bonds/Notes – CIB	09/2013	9,985,000.00		9,005,000.00	980,000.00	38,033.00	33,132.50
General Obligation Bonds/Notes – CIB	08/2013	9,840,000.00		5,000.00	9,835,000.00	231,969.00	217,093.75
General Obligation Bonds/Notes – CIB	05/2012	3,255,000.00		1,200,000.00	2,055,000.00	1,253,800.00	53,100.00
General Obligation Bonds/Notes – CIB	01/2007	495,000.00		75,000.00	420,000.00	91,274.00	9,013.52
Authority Building Obligations – CIB	12/2015	390,735.00		60,776.00	329,959.00	66,307.06	7,071.98
Compensated Absences		2,107,074.14		252,474.76	1,854,599.38		
Other Post-Employment Benefits (OPEB)		364,184.00	101,921.00		466,105.00		
Net Pension Liability		38,767,000.00	5,884,000.00		44,651,000.00		
Totals for Debt Entered:		\$85,153,993.14	\$15,980,921.00	\$10,608,250.76	\$90,526,663.38	\$2,676,736.06	\$1,185,802.26

_EA : 116191503 Central Columbia SD

Printed 10/20/2017 2:13:28 PM

Page - 1 of 1

General Fund (10)**Section 1: Tuition/Purchased Services as Reported within Expenditure Detail**

	Amount
Tuition Reported in General Fund Expenditures 1000-560	1,393,359.77
Purchased Services in General Fund Expenditures 1000-594 and 1000-597	235.17
Section 1 Total	\$1,393,594.94

Section 2: Tuition Paid to Institution Types During Fiscal Year

	Tuition Paid For Nonspecial Education	Tuition Paid For Special Education	Total
1 1306 Institutions			
2 Institutionalized Children's Programs			
3 Juveniles Incarcerated in Adult Facilities			
4 Residential Treatment Facilities			
5 Other Local Education Agencies	7,341.90		7,341.90
6 Brick and Mortar Charter Schools			
7 Cyber Charter Schools	332,394.31		332,394.31
8 Career and Technology Centers	1,048,854.00		1,048,854.00
9 Approved Private Schools	1,139.11		1,139.11
10 PA Chartered Schools for the Deaf and Blind			
11 Private Residential Rehabilitative Institutions	3,330.45		3,330.45
12 Juvenile Detention Centers			
13 Special Program Jointures			
14 Other Tuition Not Included Elsewhere In This Section	535.17		535.17
Section 2 Total	\$1,393,594.94		\$1,393,594.94

<u>Val Number</u>	<u>Description</u>	<u>Justification</u>
41130	There is an entry in function 5150- 990 object "Other". Please explain what constitutes "Other". Expenditure 5150-990, Fund 10: \$92,453.75	This was the cost of a bond refinance
41540	Expenditure Detail, Salaries (Object 100) and Benefits (Object 200 series): Amounts must be entered for both Salaries and Benefits. Function 2340, Object 100: \$0.00 Function 2340, Object 200: \$396,979.24	Retiree Insurance
50280	SOIN: Current Year AFR amount must equal Prior Year AFR amount. SOIN, Beg Bal, Gen Obl Bnds: \$43,525,000.00 PY Ending Bal, Gen Obl Bnds: \$43,183,667.50	The 2015-16 "reductions during the FY" was noted incorrectly...the correct amount written should have stated zero.
50290	SOIN: Current Year AFR amount must equal Prior Year AFR amount. SOIN, Beg Bal, Auth Bldg Obl: \$390,735.00 PY Ending Bal, Auth Bldg Obl: \$371,701.54	Portion of the principal id determined by market values on a year to year basis. Also, previous year "debt details" principal only included interest.
50440	SESS - 2260 Instruction and Curriculum Development Services: SESS Schedule amounts for Special Education vary from prior year by 40% or more. Correct the data or enter a justification. SESS Schedule 2260: \$145,209.57 Prior Year SESS Schedule 2260: \$66,640.48	Special Ed director accounts have been moved to 2260
50450	SESS - 2350 Legal and Accounting Services: SESS Schedule amounts for Special Education vary from prior year by 40% or more. Correct the data or enter a justification. SESS Schedule 2350: \$5,035.39 Prior Year SESS Schedule 2350: \$2,577.72	Special Ed acquired additional cost for legal fees as a result of a due process hearing